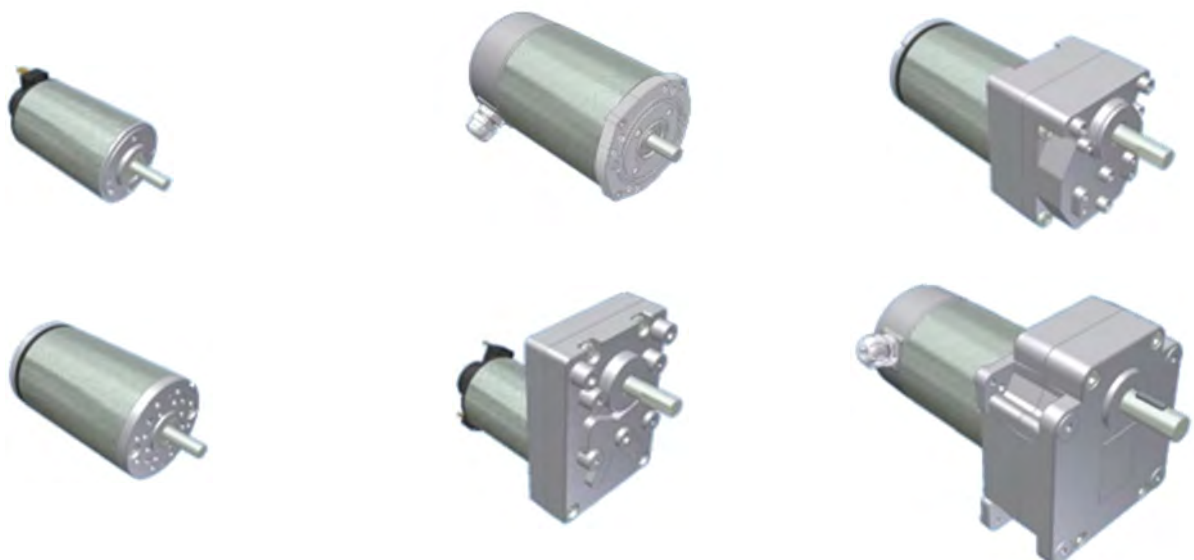


DC MOTOR

You have the idea, we motorize it

French tailormade producer of low direct courant motors

BOOKLET



Summary

	Pages
The Company	2
DC Motors.....	4
● MA 42-25 Motor.....	4
● MA 42-40 Motor.....	6
● MB 63-25 Motor	8
● MB 63-40 Motor.....	10
● MA 63-40 Motor.....	12
● MA 63-65 Motor.....	14
● MA 78-50 Motor.....	16
● MA 78-100 Motor	18
DC Geared Motors.....	20
● RA 42-15 Geared Motor	20
● RA 42-30 Geared Motor	22
● RA 42-50 Geared Motor	24
● RB 63-80 Geared Motor	26
● RA 63-90 Geared Motor	28
● RA 63-200 Geared Motor.....	30
● RA 78-200 Geared Motor.....	32
● PA 42-32 Geared Motor	34
● PA 63-42 Geared Motor	36
● PA 78-52 Geared Motor	38
DC Electric Compressors	40
Dedicated Developments	42

Short History

D'ISSY-MOTOR offers more than 100 years of expertise in the field of low power electric motors and is recognized as a reference in the development of dedicated DC motors.

Indeed, D'ISSY-MOTOR, originally Établissements PECCAUD, was created around 1910 by Mr Charles PECCAUD, and even then he has patented a system of electric compressor to be used as electric horn for vehicles.

Some dates :

- **1910:** Foundation of the first company with Charles PECCAUD in Morbier (Jura - France).
- **1913:** The first electric horns fitted with compressors are manufactured in the workshops Charles PECCAUD.
- **1962:** The PECCAUD brothers, grand-sons of the founder, continue to develop the activity in mechanical manufacturing and electric motor assembling in Morbier (Jura - France).
- **1977:** Anciens Établissements Charles PECCAUD transfers its activity of electric motor manufacturing in Issy-l'Évêque (Burgundy - France).
- **1989:** CROUZET Automatismes, then subsidiary of SEXTANT Avionique, acquires Anciens Établissements Charles PECCAUD.
- **2000:** Anciens Établissements Charles PECCAUD regains its independence with Maurice PECCAUD to mainly develop DC motors but also DC geared motors.
- **2012:** Anciens Établissements Charles PECCAUD changes its image and becomes D'ISSY-MOTOR, after more 100 years of expertise in electric motors.



Electric Horn around 1913



Factory in Morbier around 1930

Today D'ISSY-MOTOR

With its head offices and its main factory in Issy-l'Évêque (Burgundy - France), D'ISSY-MOTOR will be Your preferred partner for the development of your motorized system.

We can offer you a wide choice of low power electric motors and speed reducers that we can adapt to your needs, please feel free to contact us in case of specific or difficult problem to solve.

The application fields of D'ISSY-MOTOR motors or geared motors are very diverse; in fact, our customers are in the fields of Building, Industry, House, Automotive, Rail, Agriculture, etc. ...

In D'ISSY-MOTOR you will find the dedicated expert in your activity field which is able to offer you the well adaptable product, as you need.



Factory in Issy-l'Évêque

We are able to design for you the motorization assembly that you are looking for, and we can offer you our expertise in terms of permanent magnet motors, universal motors, brushless motors, step-by-step motors, all types of gear-boxes to adapt to the specified motors, etc. ...

Our manufacturing plant will be able to manufacture the motorization that you need, or even to integrate the motor or the gear-box that you selected as better adapted to your project.

The location of our factory in East-Central-France makes D'ISSY-MOTOR your ideal partner to effectively meet all your logistics requirements, and whatever you are located in Europe.

Our suppliers, for many located in near Europe, contribute to our reactivity and the logistics level we can offer you has no other equivalent.



YOU HAVE THE IDEA, WE MOTORISE IT

D'ISSY-MOTOR - Quality

While remaining a business-sized 'human', we based our quality procedures on ISO, to guarantee an outstanding Quality level and that will monetize your decision for choosing us.

Our products also rely on partners, subcontractors, and suppliers with exceptional production quality and service, and when possible with a preference of nearby to limit the risk of failure logistics.

Our manufacturing plant is regularly audited by major industrial companies which have the most severe Quality requirements.

In addition, the Quality commitment of the management of D'ISSY-MOTOR rests, as it should, on a continuous improvement process.

All our products are manufactured in accordance with the latest European Directives such as RoHS (Restriction of Hazardous Substances), or REACH (Registration, Evaluation and Authorization of Chemicals), etc. ...

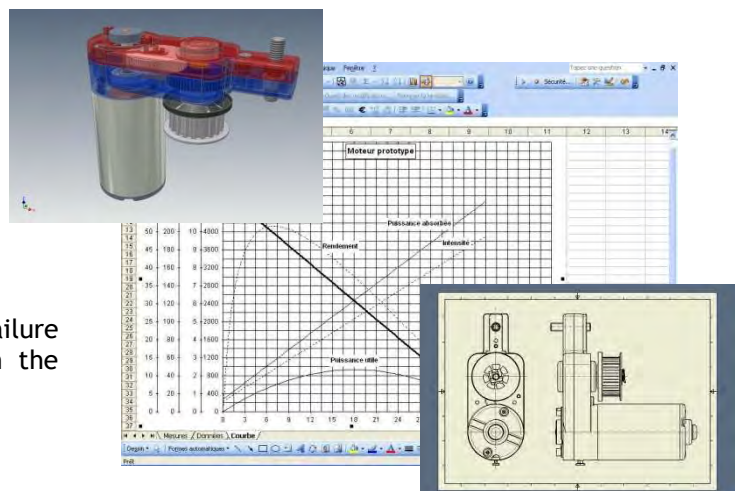
We can also provide your motorization with the necessary product approvals or certifications such as CE, UL, or others.

D'ISSY-MOTOR - Product Development

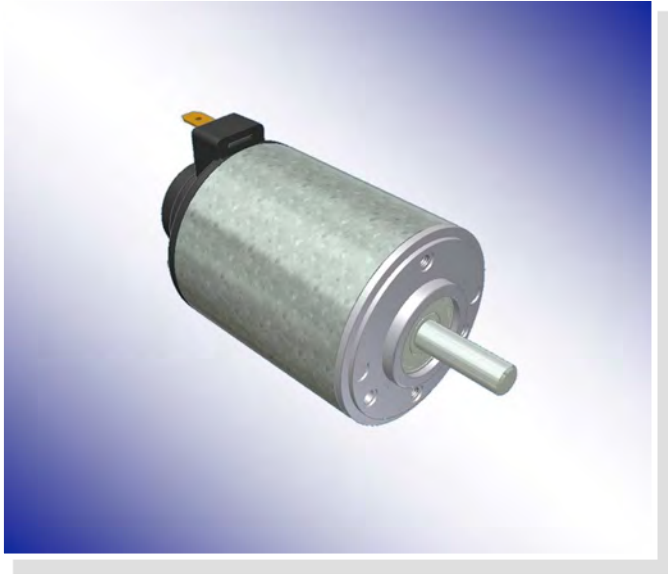
D'ISSY-MOTOR will design with you the best suited motorization in line to your system or your idea, with or without gear box, but in all cases, we can engage a development with objective cost, and we are able to integrate any devices, if necessary, to your motorization to reduce the interfaces and your supply numbers.

We can proceed to the manufacturing of your prototypes, even very specific.

We can work with you if you need, to initiate an FMEA (Failure Mode and Effects Analysis) on the product or only on the manufacturing process.



YOU HAVE THE IDEA, WE MOTORISE IT



- Permanent magnet motor.
- Rotation direction CW seen from shaft end, the reverse may be obtained by reversing the electrical connection.
- Rotation on 2 sleeve bearings made of sintered bronze or 1 or 2 ball bearings as an option.
- Electrical connection on 2 tabs of 4.8 x 0.5 mm.
- The 2 brushes are removable for possible replacement.
- Sealing Class: IP50.
- Insulation Class: B.
- Brush life time up to 3000 h depending use cycles.

Technical Data

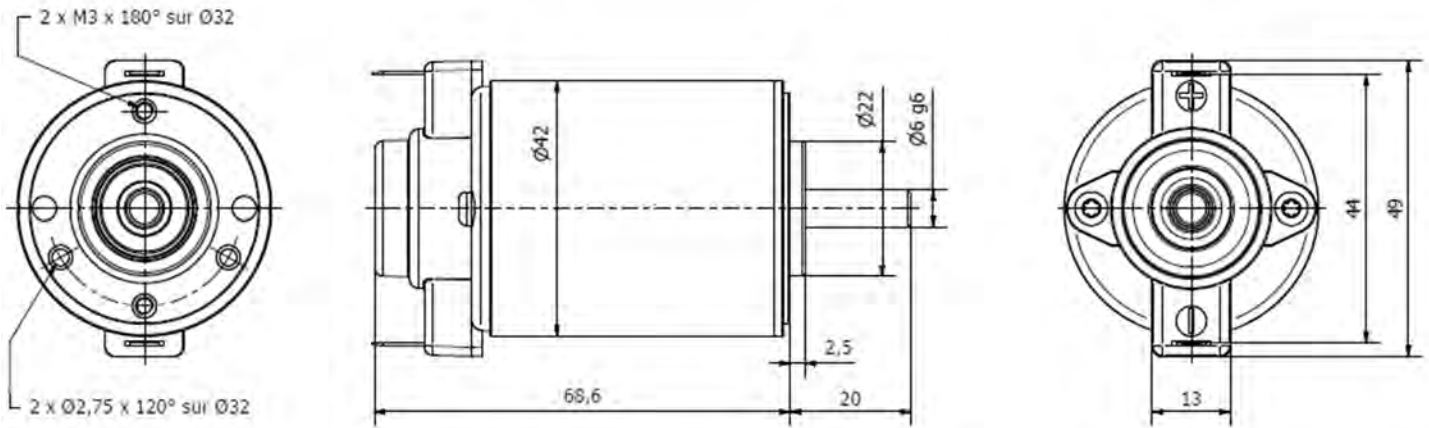
Part number	MA 42-25 001	MA 42-25 002	MA 42-25 003	MA 42-25 004	MA 42-25 005	MA 42-25 006
Input voltage (VDC)	12	24	48	12	24	48
No load rotation speed (RPM)	3950	4250	4100	2900	3100	3100
No load amperage (A)	0.50	0.30	0.15	0.30	0.16	0.09
Nominal rotation speed (RPM)	3100	3300	3150	2250	2400	2400
Nominal torque (N.cm)	3.5	3.8	3.8	2.8	2.8	3.1
Nominal output wattage (W)	11	13	13	7	7	8
Nominal amperage (A)	1.9	1.1	0.5	1.1	0.6	0.3
Nominal input wattage (W)	23	25	24	13	14	15
Nominal efficiency (%)	54	51	52	52	51	52
Locked rotor torque (N.cm)	16.5	16.8	16.5	12.5	13.0	13.5
Locked rotor amperage (A)	7.1	3.7	1.7	3.7	2.1	1.1
Rotor inertia (g.cm ²)	73	72	71	73	72	71
Max. weight (kg)	0.3	0.3	0.3	0.3	0.3	0.3

Possible options on request

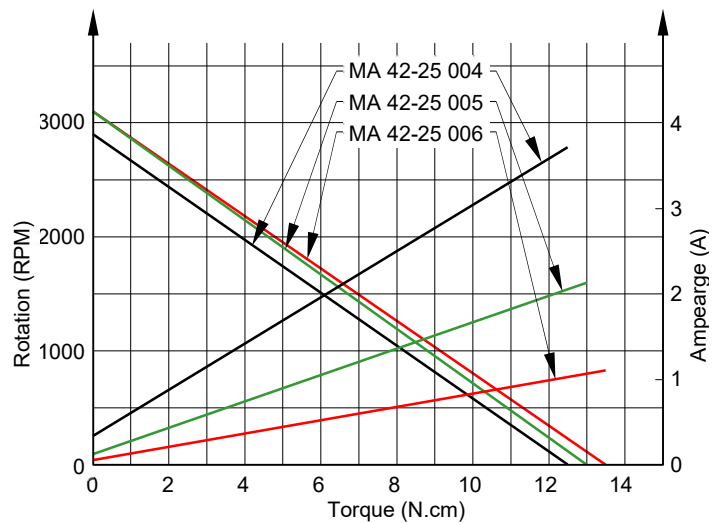
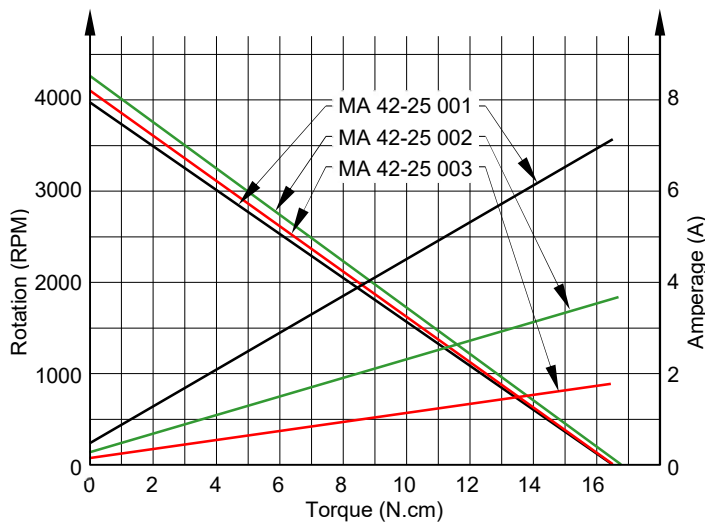
- Any other input DC voltage is possible up to 240VDC.
- Any other rotation speed between 1,000 and 8,000 RPM is possible on request.
- Possibility of 1 or 2 ball bearings.
- Possibility of other flange with fixing extensions for example.
- Possibility of shaft end dedication, in line to your need.
- Possibility to adapt a second output shaft on the opposite side of regular output shaft.
- Possibility to fit a tachometer.
- Possibility to fit a parallel gear reducer or planetary gear reducer (refer following pages).

MA 42-25 Motor

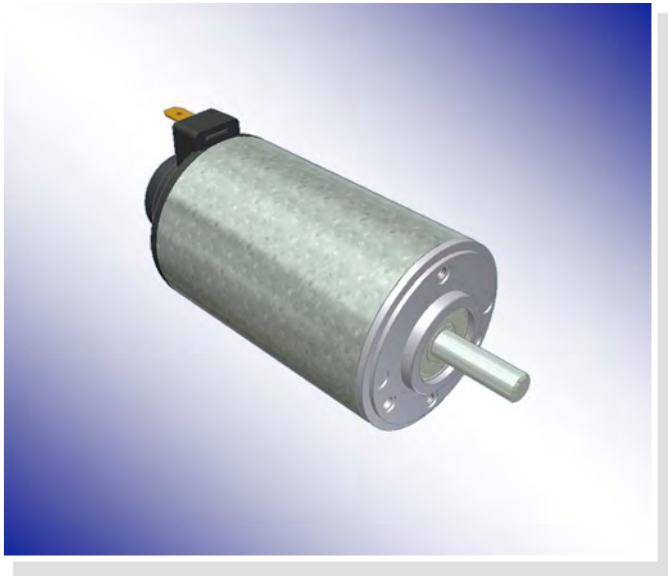
Dimensions



Performance Data



- NOTES: In any application case, the performance data can be adapted to your need.
The above performance data are subject to change by D'ISSY-MOTOR without notice.



- Permanent magnet motor.
- Rotation direction CW seen from shaft end, the reverse may be obtained by reversing the electrical connection.
- Rotation on 2 sleeve bearings made of sintered bronze or 1 or 2 ball bearings as an option.
- Electrical connection on 2 tabs of 4.8 x 0.5 mm.
- The 2 brushes are removable for possible replacement.
- Sealing Class: IP50.
- Insulation Class: B.
- Brush life time up to 3000 h depending use cycles.

Technical Data

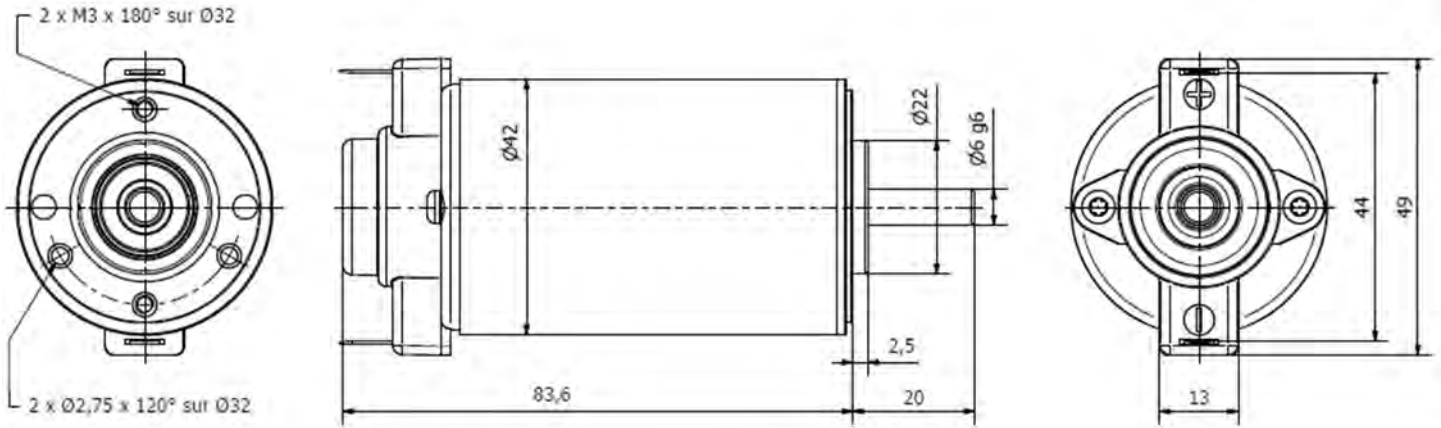
Part number	MA 42-40 001	MA 42-40 002	MA 42-40 003	MA 42-40 004	MA 42-40 005	MA 42-40 006
Input voltage (VDC)	12	24	48	12	24	48
No load rotation speed (RPM)	3900	4000	4000	2900	3000	2800
No load amperage (A)	1.00	0.55	0.27	0.4	0.2	0.1
Nominal rotation speed (RPM)	3025	3100	3100	2300	2400	2250
Nominal torque (N.cm)	6.9	7.4	7.6	4.8	4.5	4.4
Nominal output wattage (W)	22	24	25	12	11	10
Nominal amperage (A)	3.5	1.9	0.9	1.6	0.8	0.4
Nominal input wattage (W)	42	46	44	19	19	18
Nominal efficiency (%)	53	53	56	61	59	57
Locked rotor torque (N.cm)	31	33	34	23	22	22
Locked rotor amperage (A)	12	6.6	3.2	6.0	3.1	1.5
Rotor inertia (g.cm ²)	120	118	117	120	118	117
Max. weight (kg)	0.4	0.4	0.4	0.4	0.4	0.4

Possible options on request

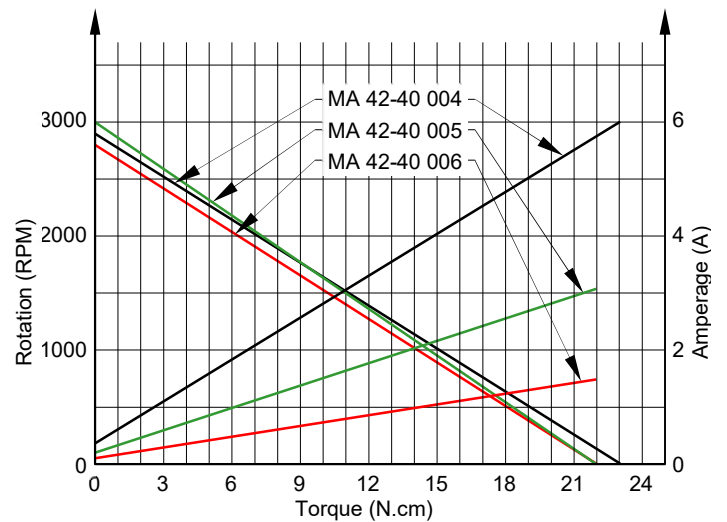
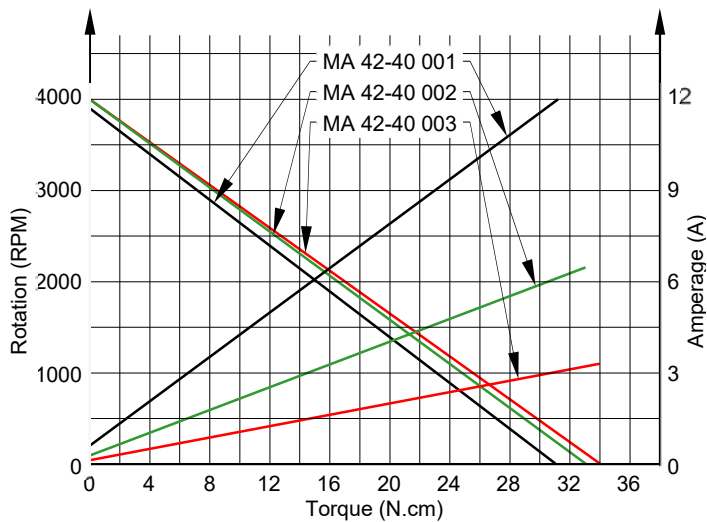
- Any other input DC voltage is possible up to 240VDC.
- Any other rotation speed between 1000 and 8000 RPM is possible on request.
- Possibility of 1 or 2 ball bearings.
- Possibility of other flange with fixing extensions for example.
- Possibility of shaft end dedication, in line to your need.
- Possibility to adapt a second output shaft on the opposite side of regular output shaft.
- Possibility to fit a tachometer.
- Possibility to fit a parallel gear reducer or planetary gear reducer (refer following pages).

MA 42-40 Motor

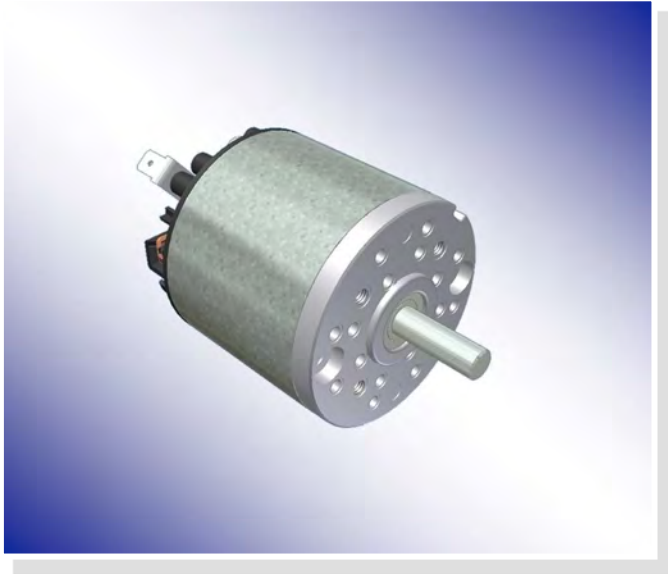
Dimensions



Performance Data



- NOTES: In any application case, the performance data can be adapted to your need.
The above performance data are subject to change by D'ISSY-MOTOR without notice.



- Permanent magnet motor, economical design.
- Rotation direction CW seen from shaft end, the reverse may be obtained by reversing the electrical connection.
- Rotation on 2 ball bearings.
- Electrical connection on 2 tabs of 6.3 x 0.8 mm.
- Open motor fitted with Zamak front flange.
- Sealing Class: IP00.
- Insulation Class: B.
- Brush life time up to 3000 h depending use cycles.

Technical Data

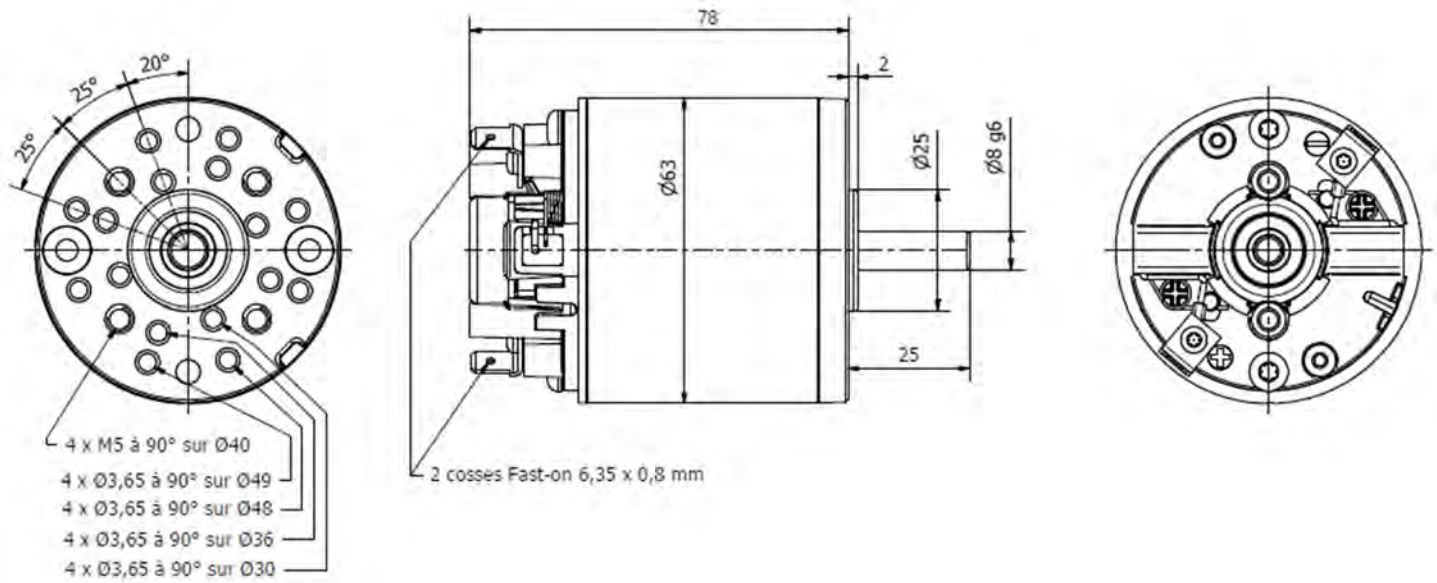
Part number	MB 63-25 001	MB 63-25 002	MB 63-25 003	MB 63-25 004	MB 63-25 005	MB 63-25 006
Input voltage (VDC)	12	24	48	12	24	48
No load rotation speed (RPM)	3400	3500	3600	3950	4050	4000
No load amperage (A)	0.7	0.4	0.2	1.0	0.5	0.2
Nominal rotation speed (RPM)	2940	3040	3100	3410	3500	3500
Nominal torque (N.cm)	11	11	13	13	14	13
Nominal output wattage (W)	35	37	41	48	50	47
Nominal amperage (A)	4.6	2.3	1.3	6.3	3.3	1.5
Nominal input wattage (W)	55	56	61	76	79	71
Nominal efficiency (%)	64	65	67	63	63	66
Locked rotor torque (N.cm)	83	87	93	98	100	103
Locked rotor amperage (A)	29	15	8.1	40	21	10
Rotor inertia (g.cm ²)	320	318	318	318	315	315
Max. weight (kg)	0.75	0.75	0.75	0.75	0.75	0.75

Possible options on request

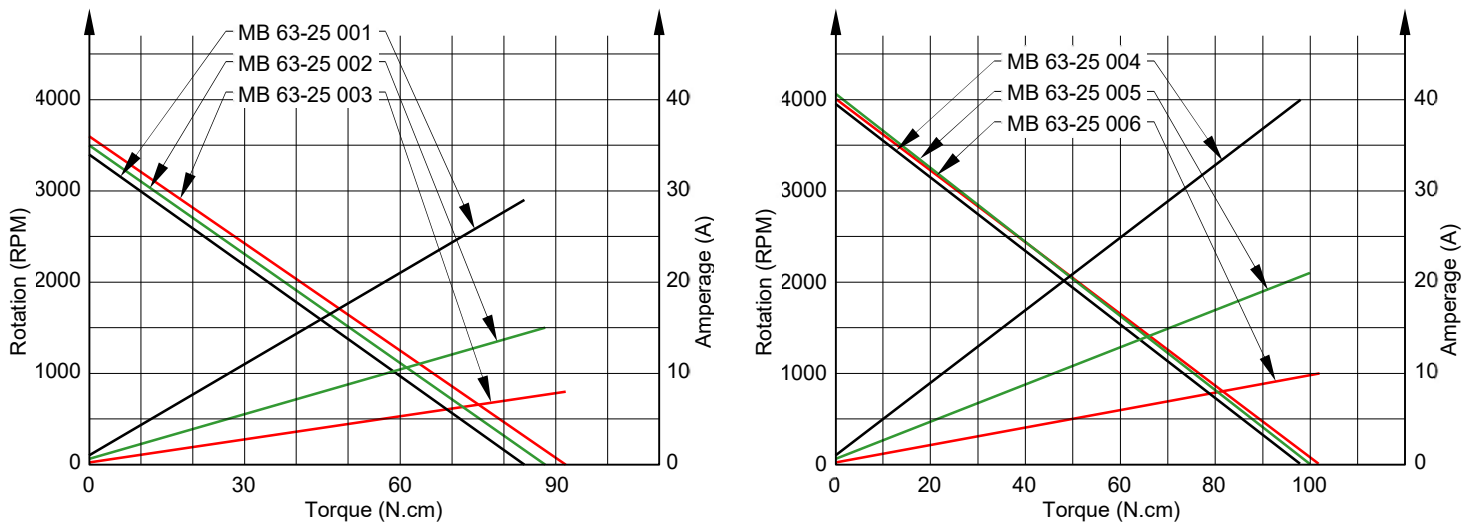
- Any other input voltage is possible up to 240VDC.
- Any other rotation speed between 1000 and 6500 RPM is possible on request.
- Possibility of other flange, in line to your need.
- Possibility of shaft end dedication, in line to your need.
- Possibility to adapt a second output shaft on the opposite side of regular output shaft.
- Possibility to fit a tachometer.
- Possibility to fit a braking system.
- Possibility to fit a parallel gear reducer or planetary gear reducer (refer following pages).

MB 63-25 Motor

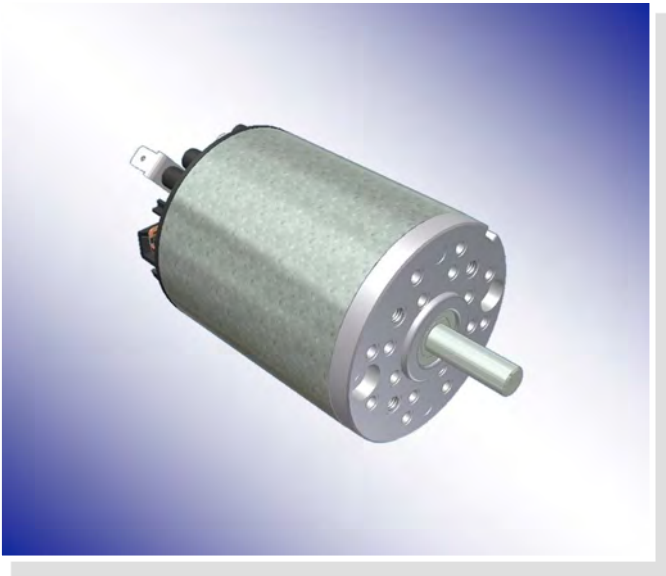
Dimensions



Performance Data



- NOTES: In any application case, the performance data can be adapted to your need.
The above performance data are subject to change by D'ISSY-MOTOR without notice.



- Permanent magnet motor, economical design.
- Rotation direction CW seen from shaft end, the reverse may be obtained by reversing the electrical connection.
- Rotation on 2 ball bearings.
- Electrical connection on 2 tabs of 6.3 x 0.8mm.
- Open motor with zamak front flange.
- Sealing class: IP00.
- Insulation class: B.
- Brush life time up to 3000 h depending use cycles.

Technical Data

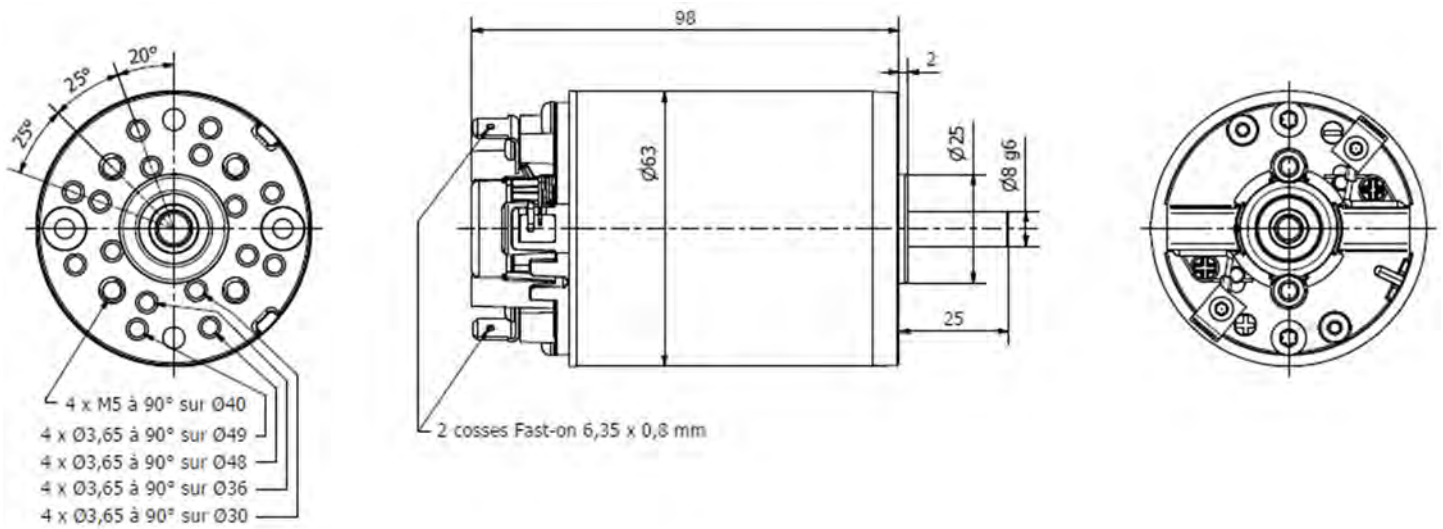
Part number	MB 63-40 001	MB 63-40 002	MB 63-40 003	MB 63-40 004	MB 63-40 005	MB 63-40 006
Input voltage (VDC)	12	24	48	110	24	72
No load rotation speed (RPM)	3700	3500	3300	3400	1270	5600
No load amperage (A)	1.0	0.5	0.2	0.08	0.2	0.3
Nominal rotation speed (RPM)	3100	2950	2850	3000	1050	4900
Nominal torque (N.cm)	14	15	14	13	12	20
Nominal output wattage (W)	46	47	42	42	13	105
Nominal amperage (A)	5.5	2.9	1.3	0.6	0.8	2.2
Nominal input wattage (W)	66	70	62	64	19	161
Nominal efficiency (%)	69	67	67	66	66	66
Locked rotor torque (N.cm)	90	100	105	120	68	170
Locked rotor amperage (A)	30	16.5	8.5	4.6	4.0	16.4
Rotor inertia (g.cm ²)	450	446	443	442	442	450
Max. weight (kg)	0.95	0.95	0.95	0.95	0.95	0.95

Possible options on request

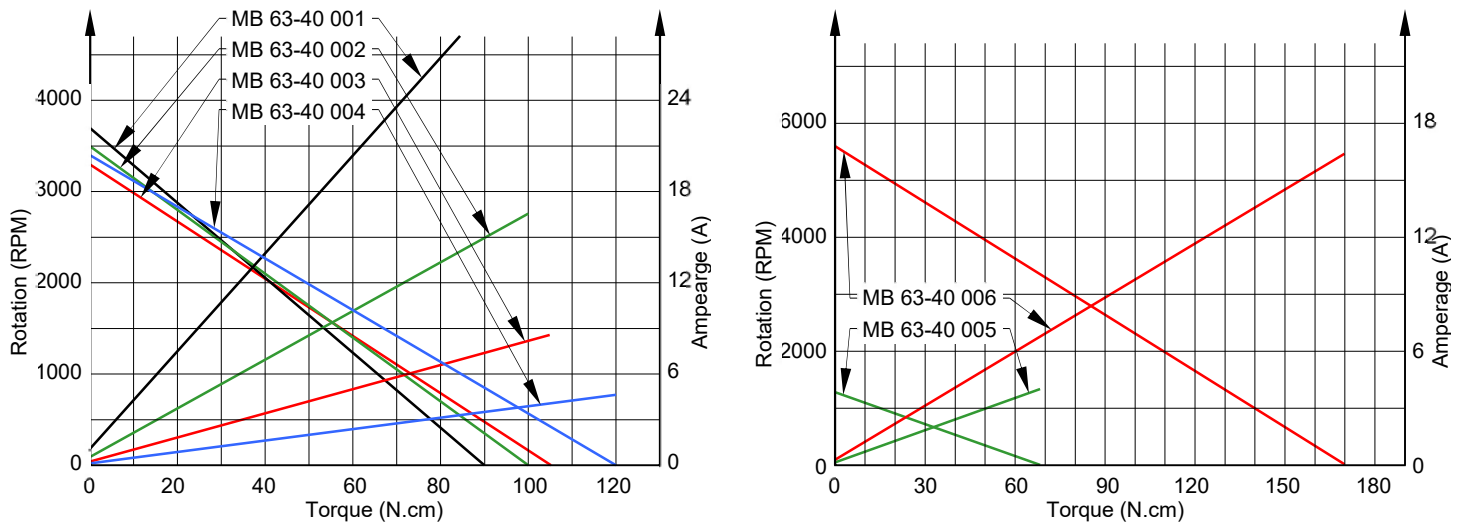
- Any other input DC voltage is possible up to 240VDC.
- Any other rotation speed between 1000 and 6500 RPM is possible on request.
- Possibility of other flange, in line to your need.
- Possibility of shaft end dedication, in line to your need.
- Possibility to adapt a second output shaft on the opposite side of regular output shaft.
- Possibility to fit a tachometer.
- Possibility to fit a braking system.
- Possibility to fit a parallel gear reducer or planetary gear reducer (refer following pages).

MB 63-40 Motor

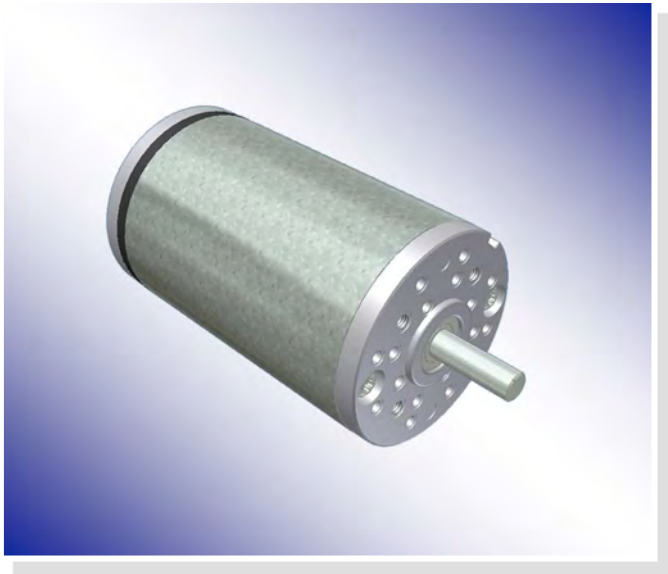
Dimensions



Performance Data



- NOTES: In any application case, the performance data can be adapted to your need.
 MB 63-40 005 & MB 63-40 006 versions are examples of dedicated motors.
 The above performance data are subject to change by D'ISSY-MOTOR without notice.



- Permanent magnet motor.
- Rotation direction CW seen from shaft end, the reverse may be obtained by reversing the electrical connection.
- Rotation on 2 ball bearings.
- Electric connection by 2 x 200 mm wires.
- Closed motor with 2 zamak flanges.
- Sealing class : IP50.
- Insulation class : B.
- Brush life time up to 3000 h depending use cycles.

Technical Data

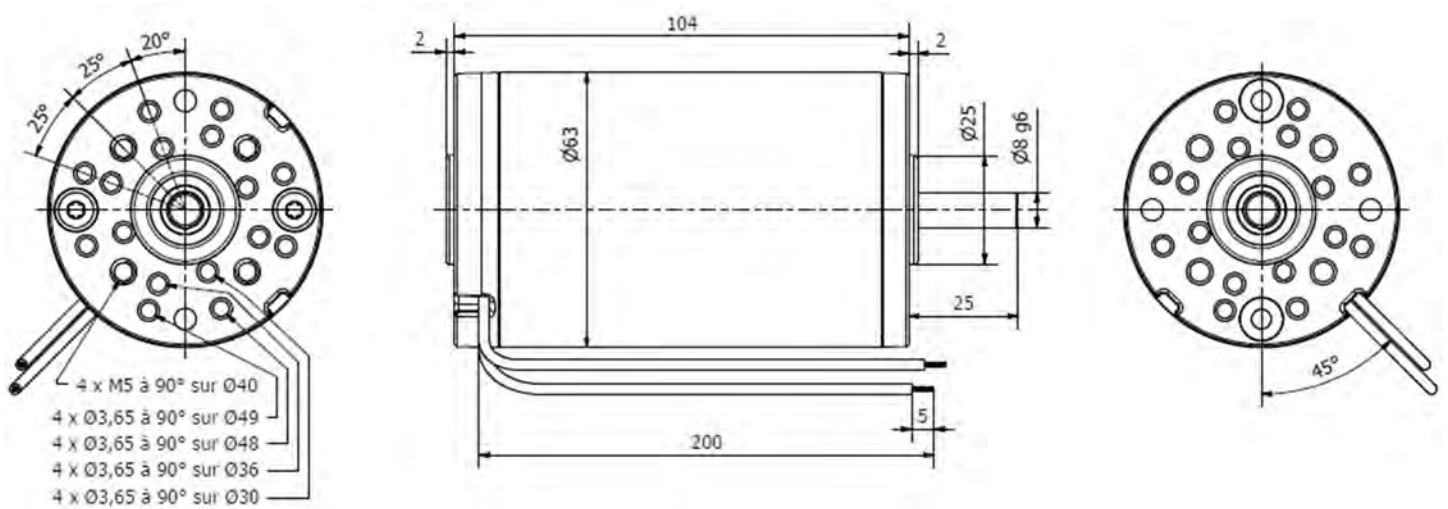
Part number	MA 63-40 001	MA 63-40 002	MA 63-40 003	MA 63-40 004	MA 63-40 005	MA 63-40 006
Input voltage (VDC)	12	24	48	110	24	72
No load rotation speed (RPM)	3600	3500	3300	3400	1270	5600
No load amperage (A)	1.0	0.5	0.2	0.08	0.2	0.3
Nominal rotation speed (RPM)	2980	2950	2850	2980	1050	4900
Nominal torque (N.cm)	14	15	14	12	12	20
Nominal output wattage (W)	44	47	42	39	13	105
Nominal amperage (A)	5.7	2.9	1.3	0.6	0.8	2.2
Nominal input wattage (W)	69	70	62	66	19	161
Nominal efficiency (%)	64	67	67	58	66	66
Locked rotor torque (N.cm)	95	100	105	100	68	170
Locked rotor amperage (A)	30	16.5	8.5	4.3	4.0	16.4
Rotor inertia (g.cm ²)	450	446	443	442	442	450
Max. weight (kg)	1.1	1.1	1.1	1.1	1.1	1.1

Possible options on request

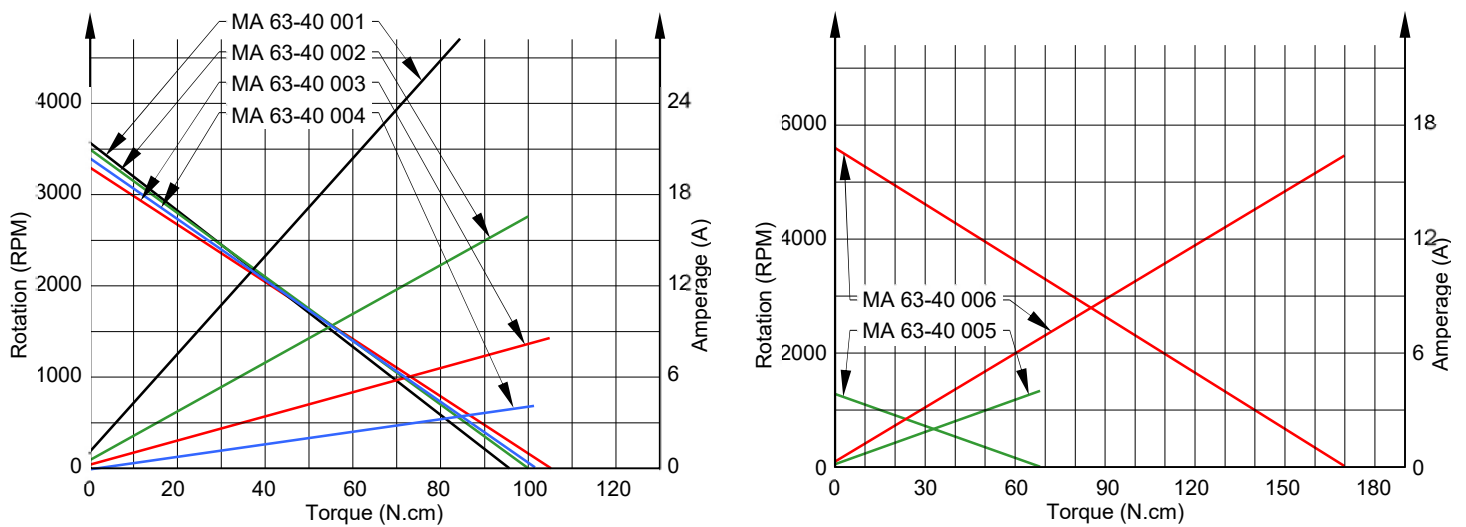
- Any other input DC voltage is possible up to 240VDC.
- Any other rotation speed between 1000 and 6500 RPM is possible on request.
- Possibility of other flange, in line to your need.
- Possibility of shaft end dedication, in line to your need.
- Possibility to adapt a second output shaft on the opposite side of regular output shaft.
- Possibility to fit a tachometer.
- Possibility to fit a braking system.
- Possibility to fit a parallel gear reducer or planetary gear reducer (refer following pages).

MA 63-40 Motor

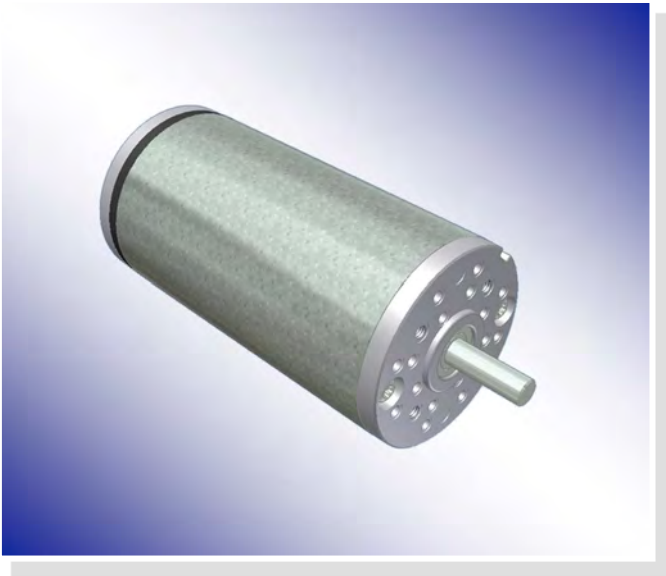
Dimensions



Performance Data



- NOTES: In any application case, the performance data can be adapted to your need.
MA 63-40 005 & MA 63-40 006 versions are examples of dedicated motors.
The above performance data are subject to change by D'ISSY-MOTOR without notice.



- Permanent magnet motor.
- Rotation direction CW seen from shaft end, the reverse may be obtained by reversing the electrical connection.
- Rotation on 2 ball bearings.
- Electric connection by 2 x 200 mm wires.
- Closed motor with 2 zamak flanges.
- Sealing class : IP50.
- Insulation class : B.
- Brush life time up to 3000 h depending use cycles.

Technical Data

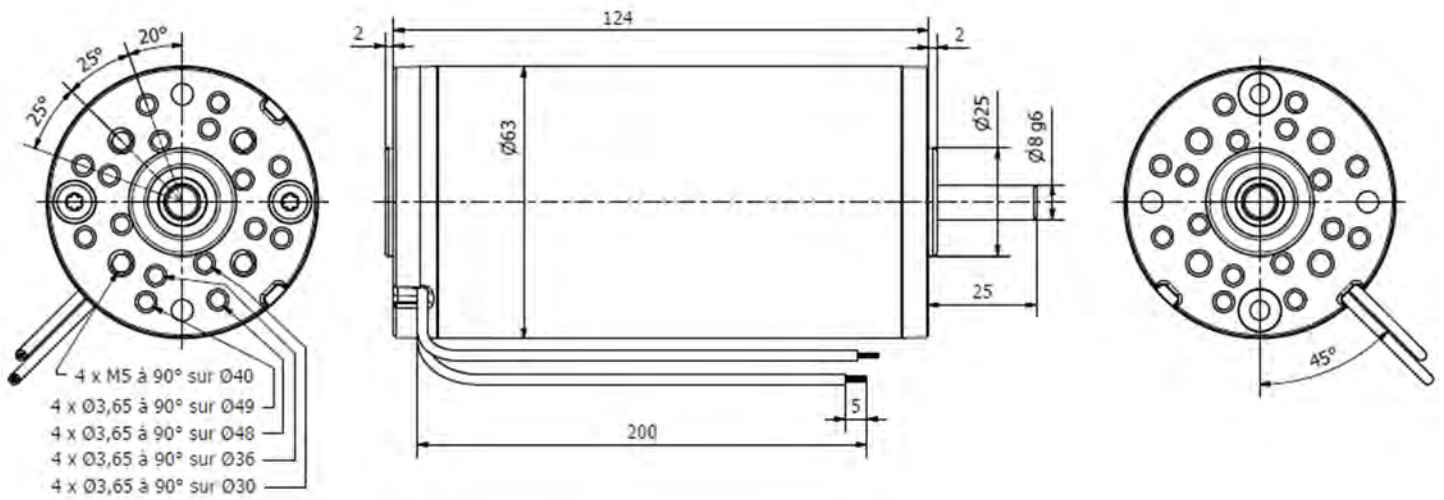
Part number	MA 63-65 001	MA 63-65 002	MA 63-65 003	MA 63-65 004	MA 63-65 005	MA 63-65 006
Input voltage (VDC)	12	24	48	12	24	48
No load rotation speed (RPM)	2650	2750	2800	3600	3750	3800
No load amperage (A)	1.3	0.7	0.4	1.9	1.0	0.5
Nominal rotation speed (RPM)	2200	2280	2300	3080	3210	3250
Nominal torque (N.cm)	21	22	23	27	29	29
Nominal output wattage (W)	49	51	55	88	97	98
Nominal amperage (A)	6.2	3.3	1.8	11.7	6.0	3.0
Nominal input wattage (W)	75	80	85	140	145	145
Nominal efficiency (%)	65	64	65	63	67	68
Locked rotor torque (N.cm)	123	125	128	190	200	200
Locked rotor amperage (A)	30	16	8	70	36	17
Rotor inertia (g.cm ²)	627	625	625	627	627	625
Max. weight (kg)	1.5	1.5	1.5	1.5	1.5	1.5

Possible options on request

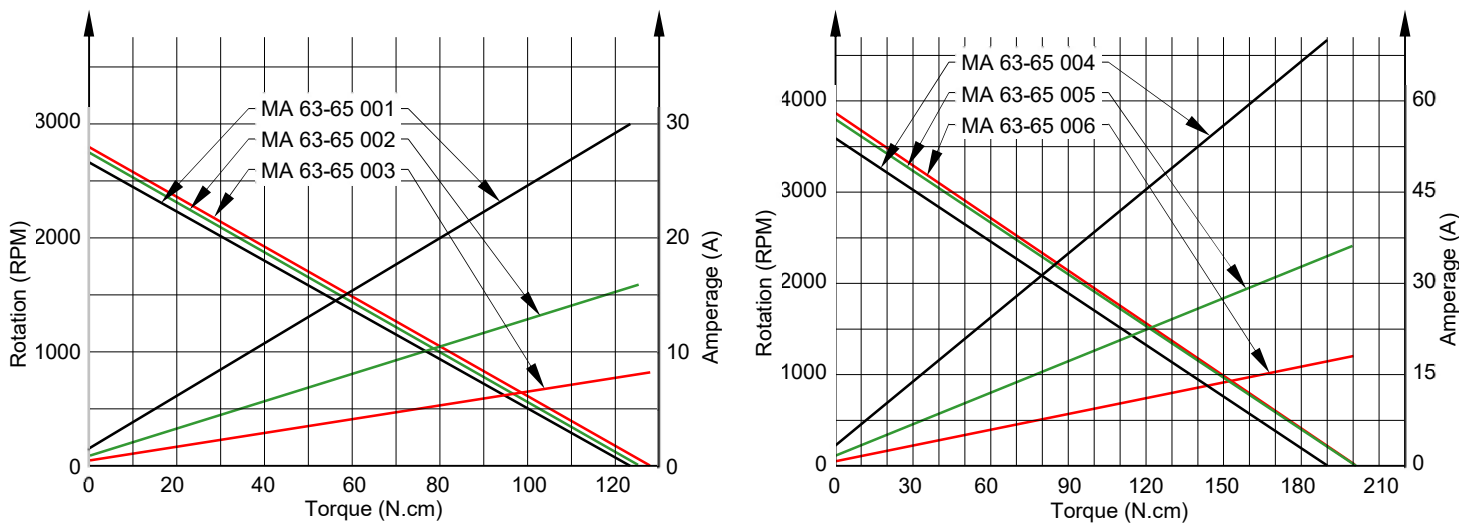
- Any other input DC voltage is possible up to 240VDC.
- Any other rotation speed between 1000 and 6500 RPM is possible on request.
- Possibility of other flange, in line to your need.
- Possibility of shaft end dedication, in line to your need.
- Possibility to adapt a second output shaft on the opposite side of regular output shaft.
- Possibility to fit a tachometer.
- Possibility to fit a braking system.
- Possibility to fit a parallel gear reducer or planetary gear reducer (refer following pages).

MA 63-65 Motor

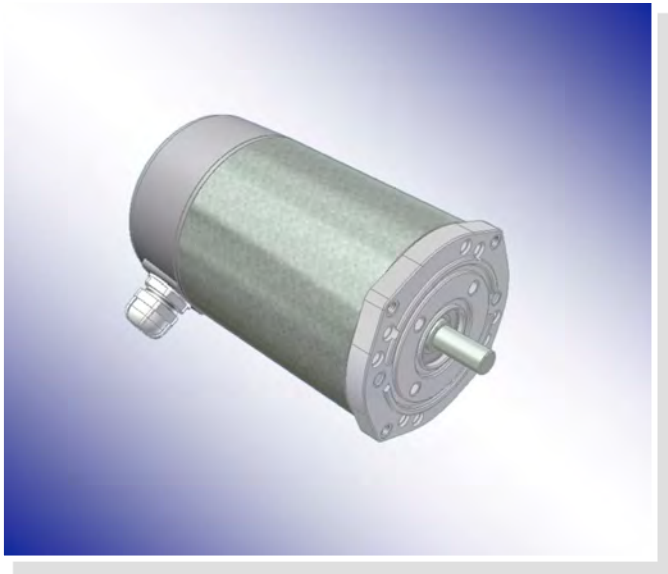
Dimensions



Performance Data



- NOTES: In any application case, the performance data can be adapted to your need.
The above performance data are subject to change by D'ISSY-MOTOR without notice.



- Permanent magnet motor.
- Rotation direction CW seen from shaft end, the reverse may be obtained by reversing the electrical connection.
- Rotation on 2 ball bearings.
- Electrical connection on 2 tabs of 6.3 x 0.8 mm.
- Open motor with Zamak 63B14 front flange.
- Shown with optional protection rear cover.
- Sealing class: IP50 (with rear cover).
- Insulation class: B.
- Brush life time up to 3000 h depending use cycles.

Technical Data

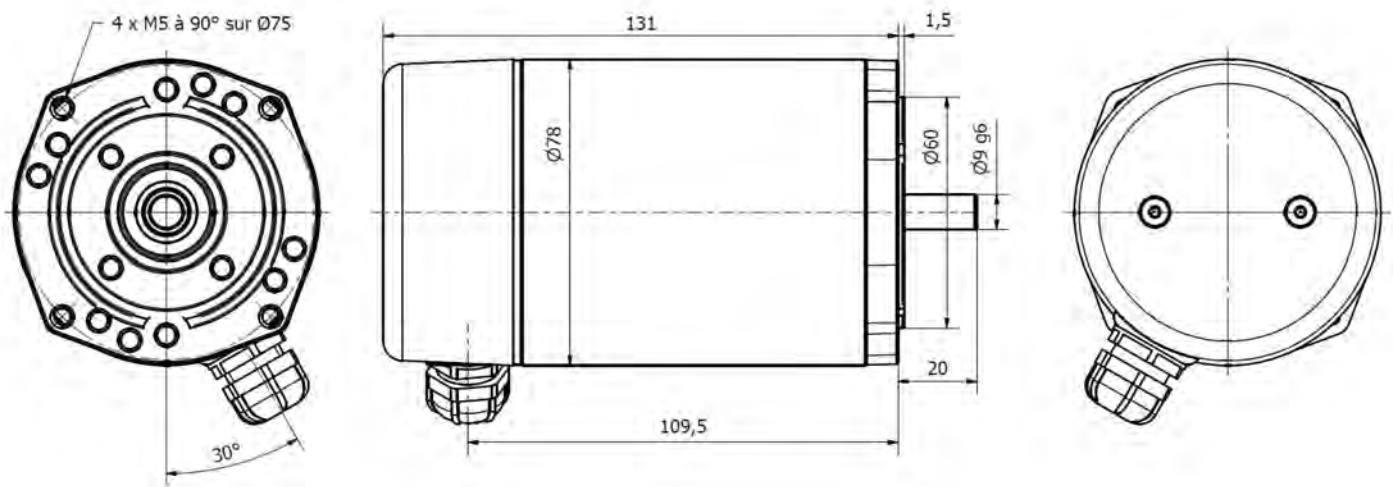
Part number	MA 78-50 001	MA 78-50 002	MA 78-50 003
Input voltage (VDC)	12	24	48
No load rotation speed (RPM)	3500	3400	3600
No load amperage (A)	2.1	1.0	0.5
Nominal rotation speed (RPM)	3020	2940	3120
Nominal torque (N.cm)	33	33	33
Nominal output wattage (W)	106	100	108
Nominal amperage (A)	13.2	6.3	3.2
Nominal input wattage (W)	159	151	154
Nominal efficiency (%)	66	66	70
Locked rotor torque (N.cm)	245	240	250
Locked rotor amperage (A)	84	40	21
Rotor inertia (g.cm ²)	3300	3300	3300
Max. weight (kg)	1.9	1.9	1.9

Possible options on request

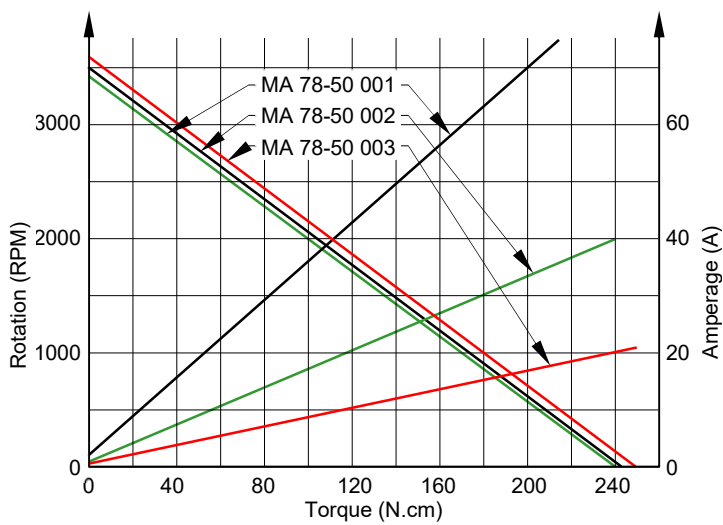
- Any other input DC voltage is possible up to 240VDC.
- Any other rotation speed between 1000 and 6500 RPM is possible on request.
- Possibility of other flange, in line to your need (plastic molded flange for example, or any other flange B14 or B5 version).
- Possibility of shaft end dedication, in line to your need.
- Possibility to adapt a second output shaft on the opposite side of regular output shaft.
- Possibility to fit a tachometer.
- Possibility to fit a braking system.
- Possibility to fit a parallel gear reducer or planetary gear reducer (refer following pages).

MA 78-50 Motor

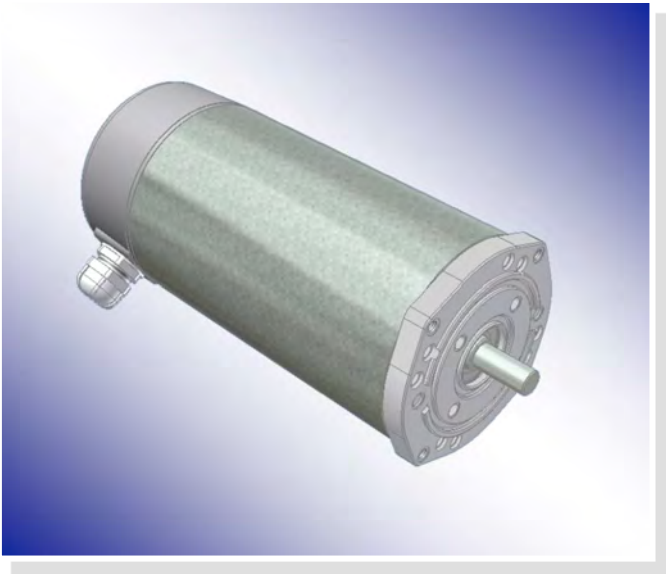
Dimensions



Performance Data



- NOTES: In any application case, the performance data can be adapted to your need.
The above performance data are subject to change by D'ISSY-MOTOR without notice.



- Permanent magnet motor.
- Rotation direction CW seen from shaft end, the reverse may be obtained by reversing the electrical connection.
- Rotation on 2 ball bearings.
- Electrical connection on 2 tabs of 6.3 x 0.8 mm.
- Open motor with Zamak 63B14 front flange.
- Shown with optional protection rear cover.
- Sealing class: IP50 (with rear cover).
- Insulation class: B.
- Brush life time up to 3000 h depending use cycles.

Technical Data

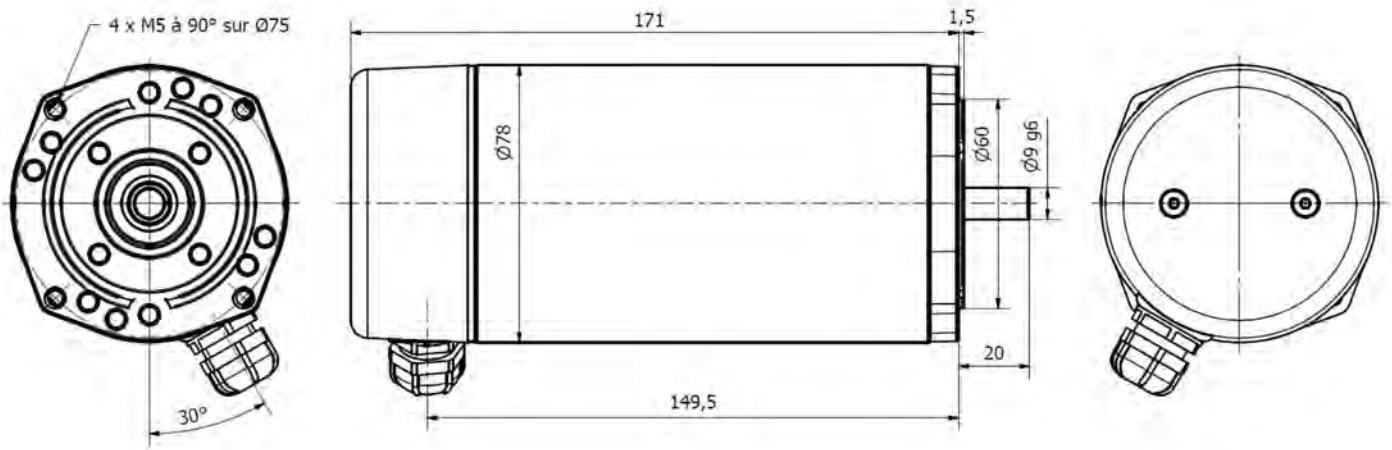
Part number	MA 78-100 001	MA 78-100 002	MA 78-100 003	MA 78-100 004	MA 78-100 005
Input voltage (VDC)	12	24	48	24	72
No load rotation speed (RPM)	2850	2970	3000	4650	4750
No load amperage (A)	2.3	1.2	0.6	1.0	0.7
Nominal rotation speed (RPM)	2520	2630	2650	4320	4270
Nominal torque (N.cm)	52	57	58	47	70
Nominal output wattage (W)	138	157	161	211	313
Nominal amperage (A)	17	8.7	4.5	12.4	6.2
Nominal input wattage (W)	205	209	215	299	449
Nominal efficiency (%)	67	75	75	71	70
Locked rotor torque (N.cm)	450	490	500	650	700
Locked rotor amperage (A)	130	66	34	170	56
Rotor inertia (g.cm ²)	5900	5900	5900	5900	5900
Max. weight (kg)	3.2	3.2	3.2	3.2	3.2

Possible options on request

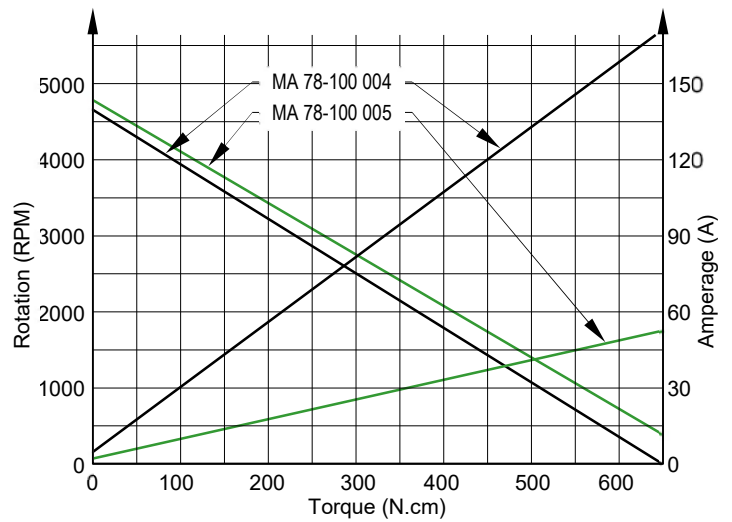
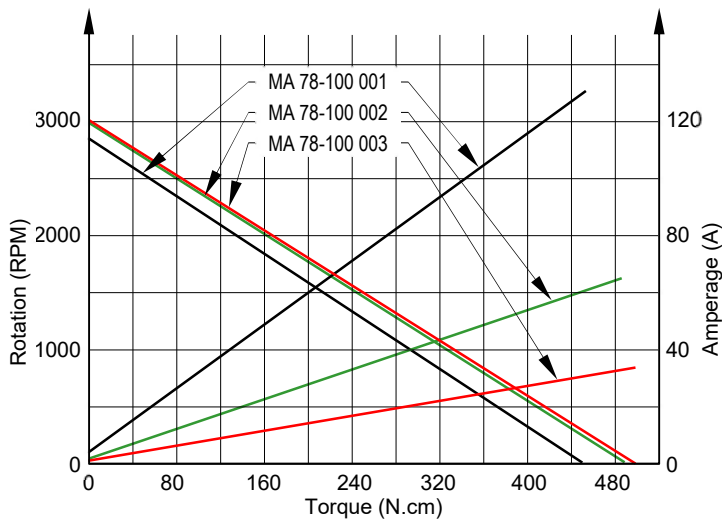
- Any other input DC voltage is possible up to 240VDC.
- Any other rotation speed between 1000 and 6500 RPM is possible on request.
- Possibility of other flange, in line to your need (plastic molded flange for example, or any other flange B14 or B5 version).
- Possibility of shaft end dedication, in line to your need.
- Possibility to adapt a second output shaft on the opposite side of regular output shaft.
- Possibility to fit a tachometer.
- Possibility to fit a braking system.
- Possibility to fit a parallel gear reducer or planetary gear reducer (refer following pages).

MA 78-100 Motor

Dimensions

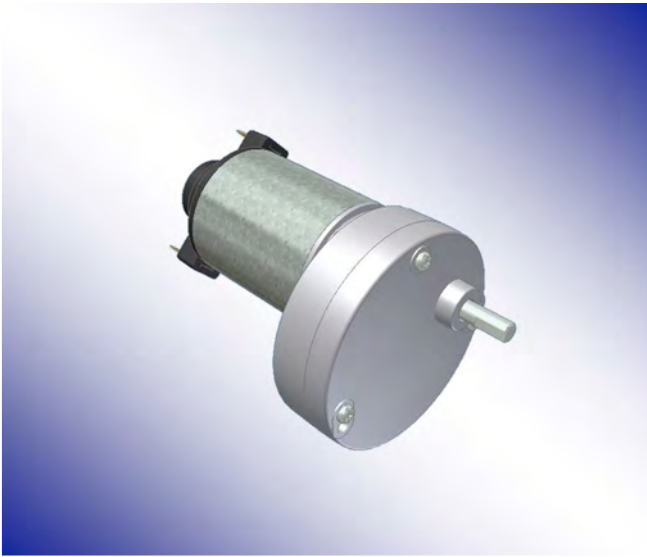


Performance Data



- NOTES: In any application case, the performance data can be adapted to your need.
The above performance data are subject to change by D'ISSY-MOTOR without notice.

RA 42-15 Geared Motor



- Permanent magnet motor.
- For MA 42-25 or MA 42-40 motor description: see previous pages following requested performance.
- Rotation direction CW seen from shaft end, the reverse may be obtained by reversing the electrical connection.
- Rotation on 2 bearings made of sintered bronze.
- Zamak gear housing with parallel gear shafts from 2 to 6 stages up to 1.5 N.m max.
- Possibility of great gear ratios from 10÷1 to 7200÷1.
- Electrical connection on 2 tabs of 4.8 mm x 0.5 mm.

Technical Data

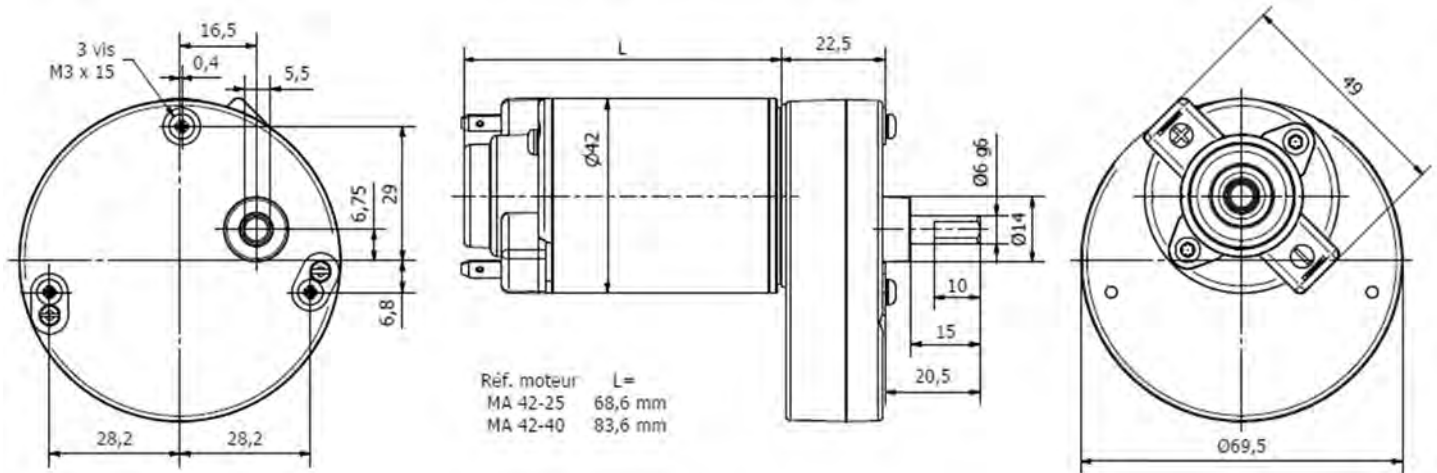
Part number		RA 42-15 001	RA 42-15 002	RA 42-15 003	RA 42-15 004	RA 42-15 005	RA 42-15 006
Input voltage (VDC)		12	24	48	12	24	48
Out. rotation speed (RPM)	Gear ratio	Motor part number fitted on gear box and nominal output torque (N.m)					
		MA 42-25 004	MA 42-25 005	MA 42-25 006	MA 42-40 004	MA 42-40 005	MA 42-40 006
240	10÷1	0.22	0.23	0.24	0.32	0.33	0.31
160	15÷1	0.33	0.35	0.36	0.49	0.50	0.46
80	30÷1	0.66	0.70	0.73	0.97	1.00	0.92
63	38÷1	0.75	0.80	0.83	1.11	1.14	1.05
43	56÷1	1.10	1.18	1.22	1.50	1.50	1.50
32	75÷1	1.48	1.50	1.50	1.50	Fitting model MA 42-40 motor is unnecessary for these gear ratios, because gear box is limited to 1.5 N.m.	
26	94÷1	1.50	1.50	1.50	1.50		
21	113÷1	1.50	1.50	1.50	1.50		
16	150÷1	1.50	1.50	1.50	1.50		
12	200÷1	1.50	1.50	1.50	1.50		
9.6	250÷1	1.50	1.50	1.50	1.50		
6.7	360÷1	1.50	1.50	1.50	1.50		
4.3	563÷1	1.50	1.50	1.50	1.50		
2.5	960÷1	1.50	1.50	1.50	1.50		
1.25	1920÷1	1.50	1.50	1.50	1.50		
0.55	4320÷1	1.50	1.50	1.50	1.50		
0.33	7200÷1	1.50	1.50	1.50	1.50		
Max. overall weight (kg)		0.6	0.6	0.6	0.7	0.7	0.7

Possible options on request

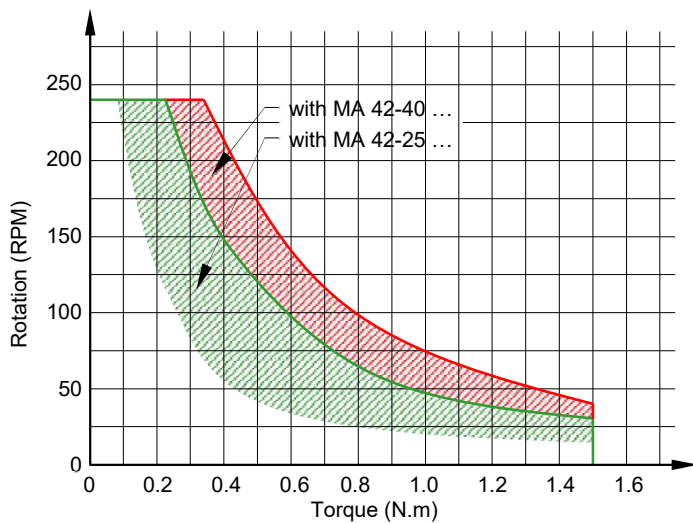
- Possibility of shaft end dedication, in line to your need.
- Possibility to supply intermediate gear ratio.
- Possibility to fit a tachometer or a braking system onto the motor.

RA 42-15 Geared Motor

Dimensions

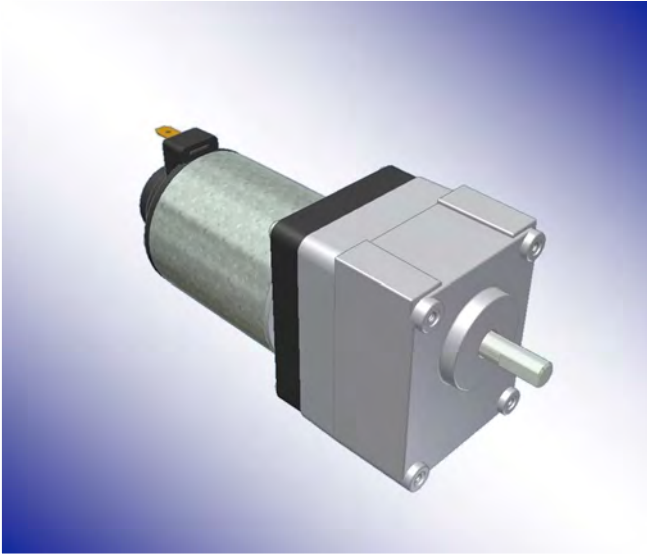


Performance Data



- NOTES: In any application case, the performance data can be adapted to your need.
The above performance data are subject to change by D'ISSY-MOTOR without notice.

RA 42-30 Geared Motor



- Permanent magnet motor.
- For MA 42-25 or MA 42-40 motor description: see previous pages following requested performance.
- Rotation direction CW seen from shaft end, the reverse may be obtained by reversing the electrical connection.
- Rotation on 1 ball bearing on output and 1 sleeve bearing made of sintered bronze at opposite side.
- Zamak gear housing with parallel gear shafts from 2 to 5 stages up to 3.0 N.m max.
- Possibility of gear ratios from 5.34÷1 to 752÷1 in a small size.
- Electrical connection on 2 tabs of 4.8 mm x 0.5 mm.

Technical Data

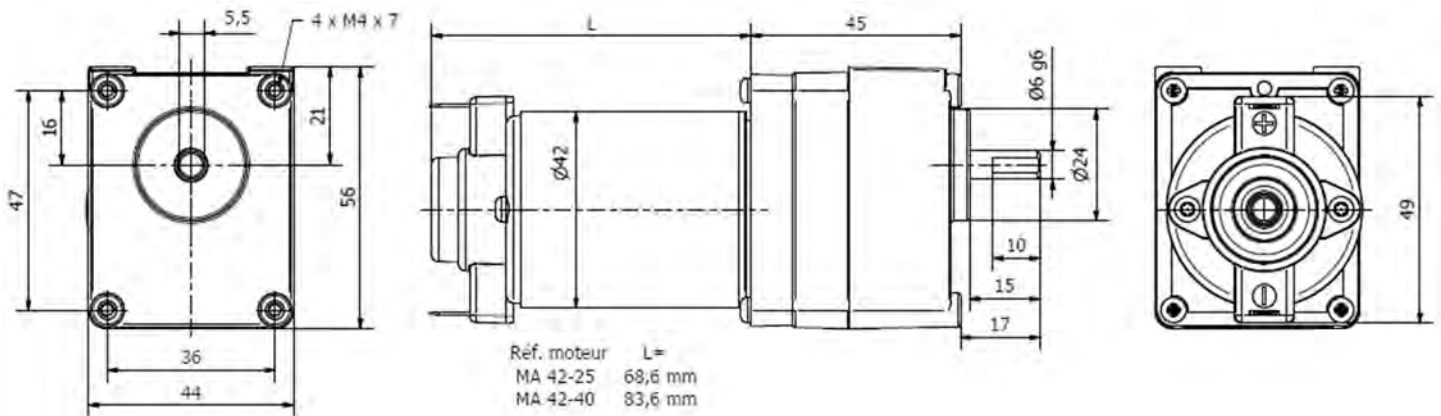
Part number	RA 42-30 001	RA 42-30 002	RA 42-30 003	RA 42-30 004	RA 42-30 005	RA 42-30 006	
Input voltage (VDC)	12	24	48	12	24	48	
Out. rotation speed (RPM)	Gear ratio	Motor part number fitted on gear box and nominal output torque (N.m)					
		MA 42-25 001	MA 42-25 002	MA 42-25 003	MA 42-40 001	MA 42-40 002	MA 42-40 003
590	5.34÷1	0.14	0.17	0.16	0.26	0.29	0.31
358	8.79÷1	0.23	0.28	0.26	0.43	0.48	0.51
269	11.7÷1	0.30	0.38	0.34	0.57	0.65	0.69
127	24.8÷1	0.58	0.72	0.65	1.08	1.23	1.30
89	35.2÷1	0.82	1.03	0.92	1.54	1.74	1.85
67	47÷1	1.10	1.37	1.23	2.06	2.33	2.47
38	83÷1	1.74	2.17	1.95	3.00	3.00	3.00
32	98÷1	2.05	2.56	2.31	3.00	3.00	3.00
29	110÷1	2.32	2.90	2.61	3.00	3.00	3.00
24	131÷1	2.74	3.00	3.00	3.00	Fitting model MA 42-40 motor is unnecessary for these gear ratios, because gear box is limited to 3.0 N.m.	
19	169÷1	3.00	3.00	3.00			
16	198÷1	3.00	3.00	3.00			
11	275÷1	3.00	3.00	3.00			
8.7	363÷1	3.00	3.00	3.00			
7.8	404÷1	3.00	3.00	3.00			
5.6	563÷1	3.00	3.00	3.00			
4.2	752÷1	3.00	3.00	3.00			
Max. overall weight (kg)		0.6	0.6	0.6	0.7	0.7	0.7

Possible options on request

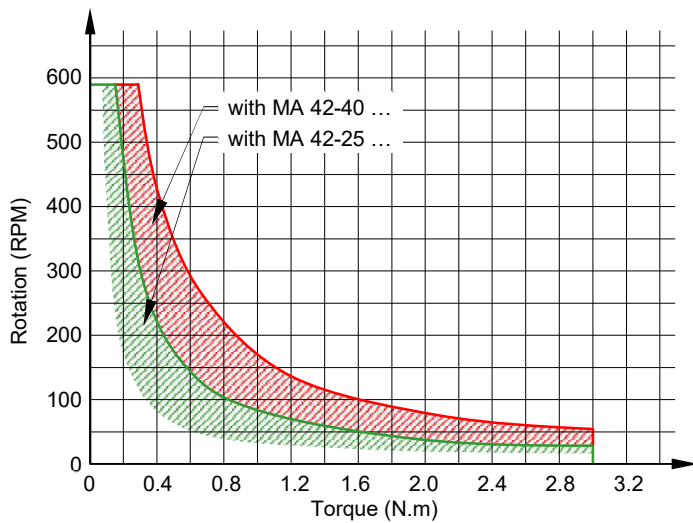
- Possibility of shaft end dedication, in line to your need.
- Possibility to supply intermediate gear ratio.
- Possibility to fit a tachometer or a braking system onto the motor.

RA 42-30 Geared Motor

Dimensions

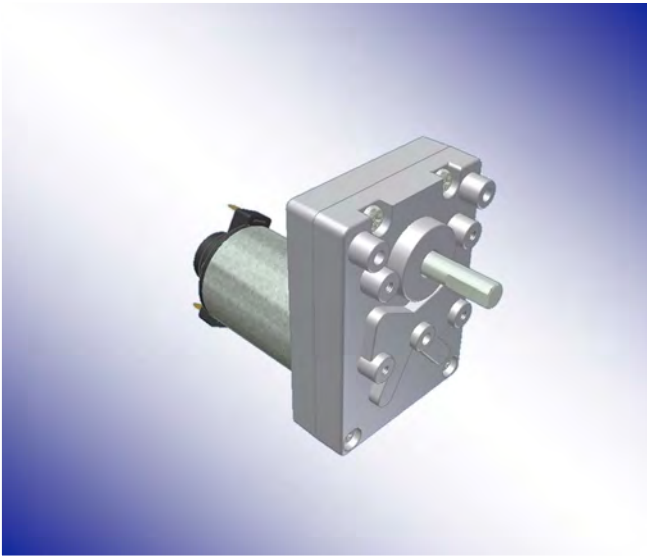


Performance Data



- NOTES: In any application case, the performance data can be adapted to your need.
The above performance data are subject to change by D'ISSY-MOTOR without notice.

RA 42-50 Geared Motor



- Permanent magnet motor.
- For MA 42-25 or MA 42-40 motor description: see previous pages following requested performance.
- Rotation direction CW seen from shaft end, the reverse may be obtained by reversing the electrical connection.
- Rotation on 2 ball bearings on output shaft.
- Zamak gear housing with parallel gear shafts from 3 to 5 stages up to 5.5 N.m max.
- Possibility of gear ratios from 10.5÷1 to 1480÷1 with 2 shafts in option.
- Electrical connection on 2 tabs of 4.8 mm x 0.5 mm.

Technical Data

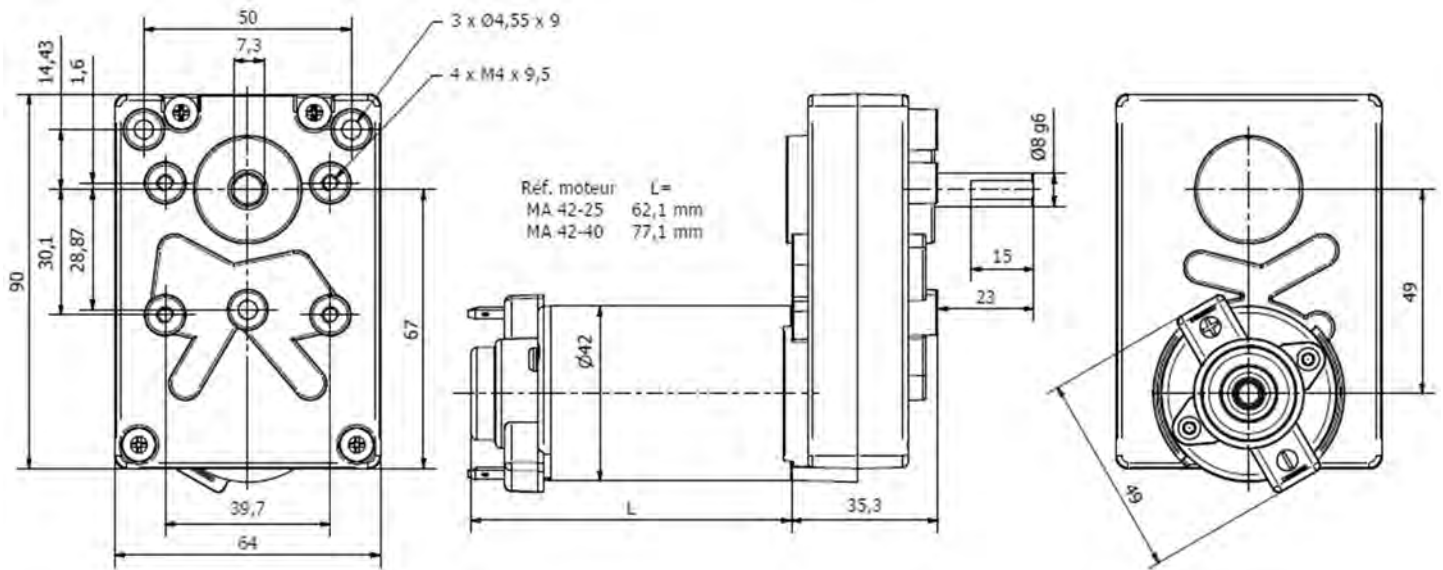
Part number		RA 42-50 001	RA 42-50 002	RA 42-50 003	RA 42-50 004	RA 42-50 005	RA 42-50 006
Input voltage (VDC)		12	24	48	12	24	48
Out. rotation speed (RPM)	Gear ratio	Motor part number fitted on gear box and nominal output torque (N.m)					
		MA 42-25 001	MA 42-25 002	MA 42-25 003	MA 42-40 001	MA 42-40 002	MA 42-40 003
300	10.5÷1	0.24	0.31	0.28	0.46	0.52	0.55
153	20.6÷1	0.48	0.60	0.54	0.90	1.02	1.08
88	35.6÷1	0.83	1.04	0.93	1.56	1.76	1.87
65	48.4÷1	1.13	1.41	1.27	2.12	2.40	2.54
44	71.6÷1	1.67	2.09	1.88	3.13	3.55	3.76
35	90.5÷1	2.11	2.64	2.37	3.96	4.49	4.75
23	138÷1	2.89	3.62	3.25	5.42	5.50	5.50
18	173÷1	3.63	4.54	4.09	5.50	5.50	5.50
14	232÷1	4.87	5.50	5.48	5.50		5.50
10.5	300÷1	5.50	5.50	5.50	Fitting model MA 42-40 motor is unnecessary for these gear ratios, because gear box is limited to 5.5 N.m.		
7.8	405÷1	5.50	5.50	5.50			
6.3	498÷1	5.50	5.50	5.50			
5.2	606÷1	5.50	5.50	5.50			
4.4	709÷1	5.50	5.50	5.50			
3.7	847÷1	5.50	5.50	5.50			
2.8	1133÷1	5.50	5.50	5.50			
2.1	1480÷1	5.50	5.50	5.50			
Max. overall weight (kg)		0.8	0.8	0.8	0.9	0.9	0.9

Possible options on request

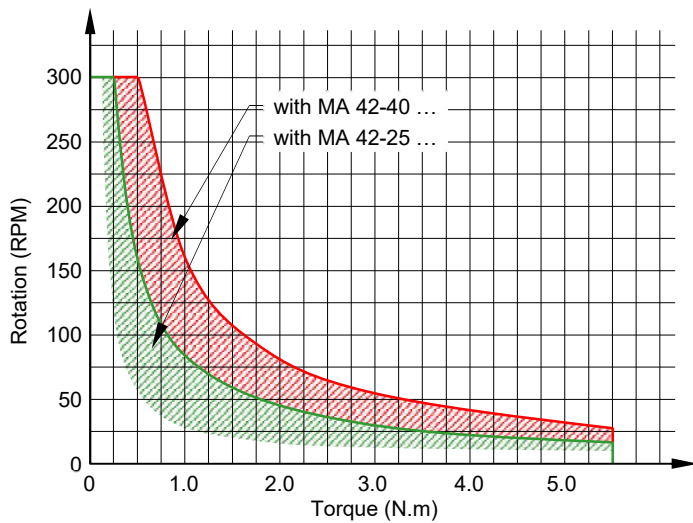
- Possibility of shaft end dedication, in line to your need, with possibility of 2 opposite shaft ends.
- Possibility to supply intermediate gear ratio.
- Possibility to fit a tachometer or a braking system onto the motor.

RA 42-50 Geared Motor

Dimensions

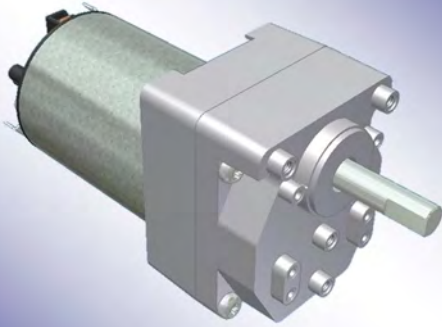


Performance Data



- NOTES: In any application case, the performance data can be adapted to your need.
The above performance data are subject to change by D'ISSY-MOTOR without notice.

RB 63-80 Geared Motor



- Permanent magnet motor.
- For MB 63-25 or MB 63-40 motor description: see previous pages following requested performance.
- Rotation direction CW seen from shaft end, the reverse may be obtained by reversing the electrical connection.
- Open motor to be installed on protected systems.
- Rotation on 2 ball bearings on output shaft.
- Zamak gear housing with parallel gear shafts from 2 to 6 stages up to 8.0 N.m max.
- Possibility of gear ratios from 3.7÷1 to 2880÷1 in a small dimension.
- Electrical connection on 2 tabs of 6.35 mm x 0.8 mm.

Technical Data

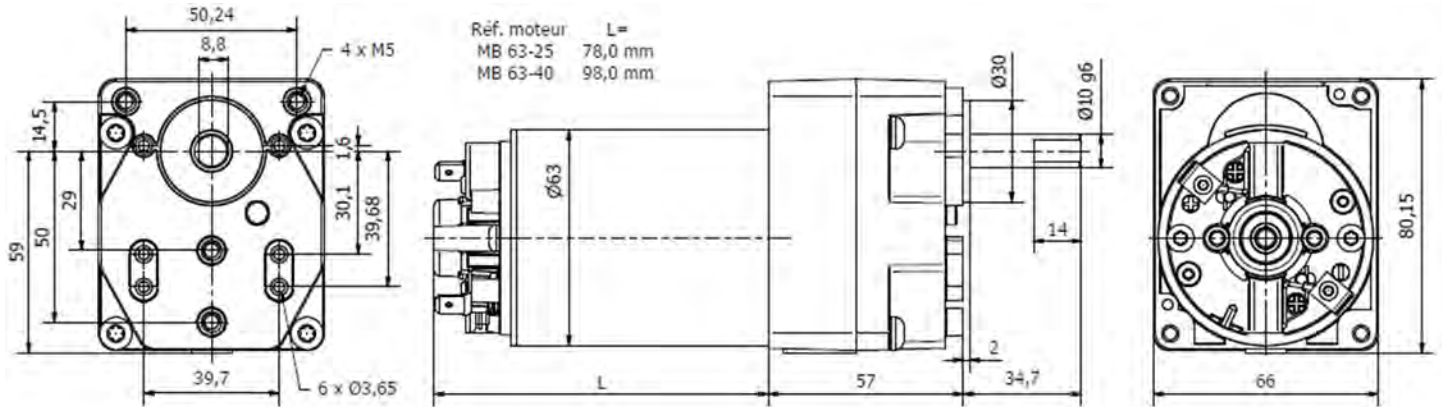
Part number	RB 63-80 001	RB 63-80 002	RB 63-80 003	RB 63-80 004	RB 63-80 005	RB 63-80 006	
Input voltage (VDC)	12	24	48	12	24	48	
Out. rotation speed (RPM)	Gear ratio	Motor part number fitted on gear box and nominal output torque (N.m)					
		MB 63-25 001	MB 63-25 002	MB 63-25 003	MB 63-40 001	MB 63-40 002	MB 63-40 003
757	3.7÷1	0.39	0.45	0.51	0.63	0.60	0.57
136	20.6÷1	0.63	0.73	0.83	1.02	0.97	0.92
79	35.6÷1	1.26	1.46	1.65	2.04	1.94	1.85
58	48.4÷1	2.24	2.58	2.92	3.61	3.44	3.27
39	71.6÷1	3.50	4.04	4.57	5.65	5.38	5.11
31	90.5÷1	4.27	4.92	5.58	6.89	6.56	6.23
20	138÷1	5.69	6.56	7.44	8.00	8.00	8.00
16	173÷1	7.37	8.00	8.00	8.00	Fitting model MB 63-40 motor is unnecessary for these gear ratios, because gear box is limited to 8.0 N.m.	
12	232÷1	8.00	8.00	8.00	8.00		
9.3	300÷1	8.00	8.00	8.00	8.00		
6.9	405÷1	8.00	8.00	8.00	8.00		
5.6	498÷1	8.00	8.00	8.00	8.00		
4.6	606÷1	8.00	8.00	8.00	8.00		
3.9	709÷1	8.00	8.00	8.00	8.00		
3.3	847÷1	8.00	8.00	8.00	8.00		
2.5	1133÷1	8.00	8.00	8.00	8.00		
0.97	2880÷1	8.00	8.00	8.00	8.00		
Max. overall weight (kg)		1.5	1.5	1.5	1.7	1.7	1.7

Possible options on request

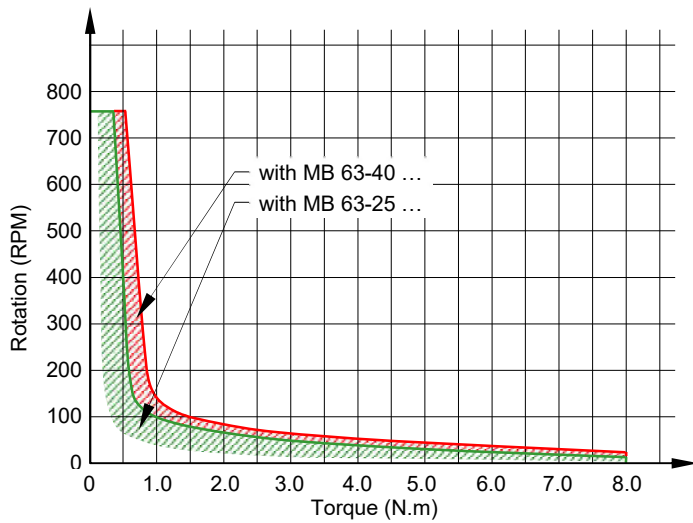
- Possibility of shaft end dedication, in line to your need.
- Possibility to supply intermediate gear ratio.
- Possibility to fit a tachometer or a braking system onto the motor.

RB 63-80 Geared Motor

Dimensions

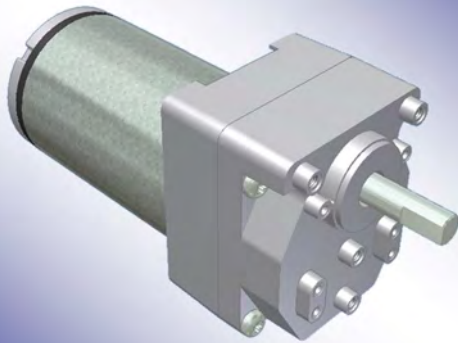


Performance Data



- NOTES: In any application case, the performance data can be adapted to your need.
The above performance data are subject to change by D'ISSY-MOTOR without notice.

RA 63-90 Geared Motor



- Permanent magnet motor.
- For MA 63-40 motor description: see previous pages following requested performance.
- Rotation direction CW seen from shaft end, the reverse may be obtained by reversing the electrical connection.
- Rotation on 2 ball bearings on output shaft.
- Zamak gear housing with parallel gear shafts from 2 to 6 stages up to 8.0 N.m max.
- Possibility of gear ratios from 3.7÷1 to 2880÷1 in a small dimension.

Technical Data

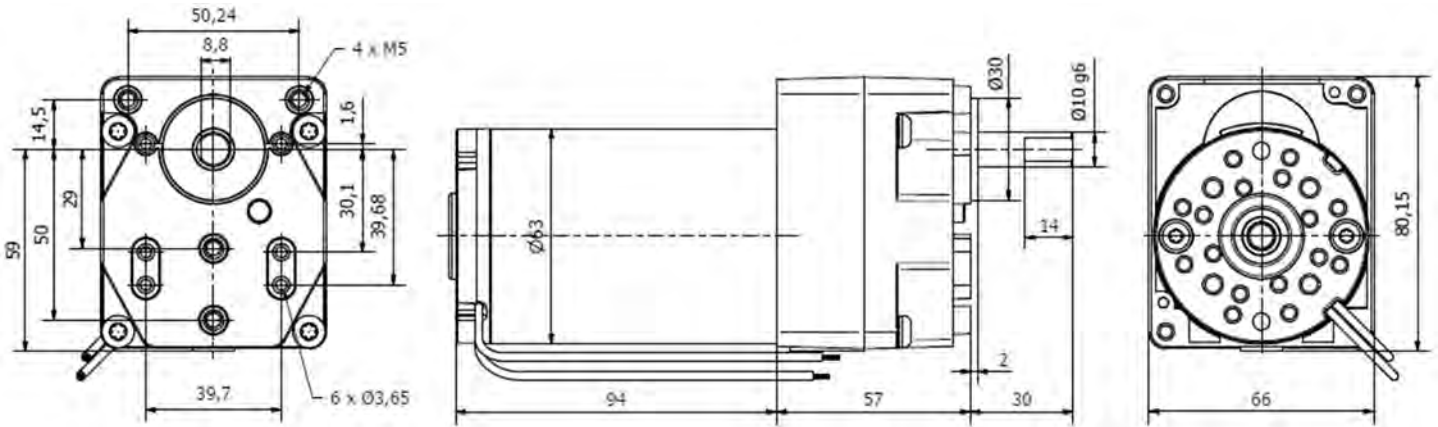
Part number		RA 63-90 001	RA 63-90 002	RA 63-90 003	RA 63-90 004
Input voltage (VDC)		12	24	48	110
Out. rotation speed (RPM)	Gear ratio	Motor part number fitted and nominal output torque (N.m)			
		MA 63-40 001	MA 63-40 002	MA 63-40 003	MA 63-40 004
811	3.7÷1	0.51	0.45	0.39	0.42
500	6.0÷1	0.83	0.73	0.63	0.68
250	12.0÷1	1.65	1.46	1.26	1.36
127	23.6÷1	2.92	2.58	2.24	2.41
81	36.9÷1	4.57	4.04	3.50	3.77
67	45.0÷1	5.58	4.92	4.27	4.59
50	60.0÷1	7.44	6.56	5.69	6.12
35	86.4÷1	8.00	8.00	7.37	7.94
28	108÷1	8.00	8.00	8.00	8.00
22	135÷1	8.00	8.00	8.00	8.00
19	160÷1	8.00	8.00	8.00	8.00
15	200÷1	8.00	8.00	8.00	8.00
10.5	288÷1	8.00	8.00	8.00	8.00
7.5	400÷1	8.00	8.00	8.00	8.00
5.0	600÷1	8.00	8.00	8.00	8.00
2.9	1024÷1	8.00	8.00	8.00	8.00
1.0	2880÷1	8.00	8.00	8.00	8.00
Max. overall weight (kg)		1.8	1.8	1.8	1.8

Possible options on request

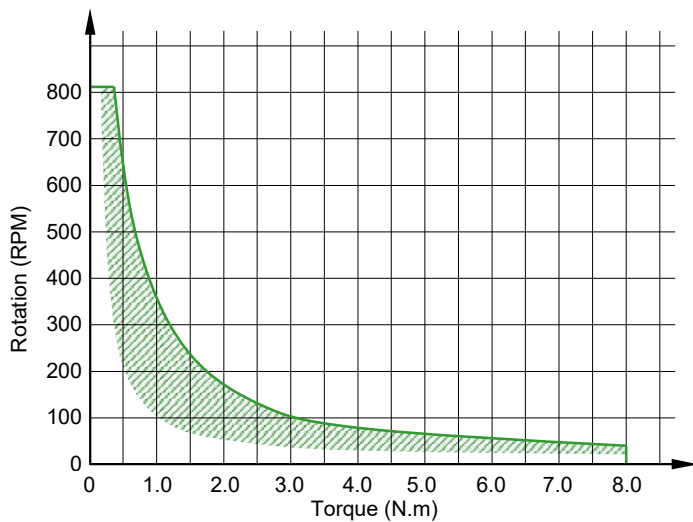
- Possibility of shaft end dedication, in line to your need.
- Possibility to supply intermediate gear ratio.
- Possibility to fit a tachometer or a braking system onto the motor.

RA 63-90 Geared Motor

Dimensions

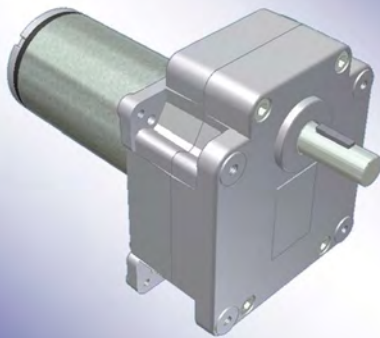


Performance Data



- **NOTES:** In any application case, the performance data can be adapted to your need.
The above performance data are subject to change by D'ISSY-MOTOR without notice.

RA 63-200 Geared Motor



- Permanent magnet motor.
- For MA 63-40 or MA 63-65 motor description: see previous pages following requested performance.
- Rotation direction CW seen from shaft end, the reverse may be obtained by reversing the electrical connection.
- Rotation on 2 ball bearings on output shaft.
- Zamak gear housing with parallel gear shafts from 2 to 5 stages up to 25.0 N.m max.
- Possibility of gear ratios from 5.0÷1 to 639÷1.

Technical Data

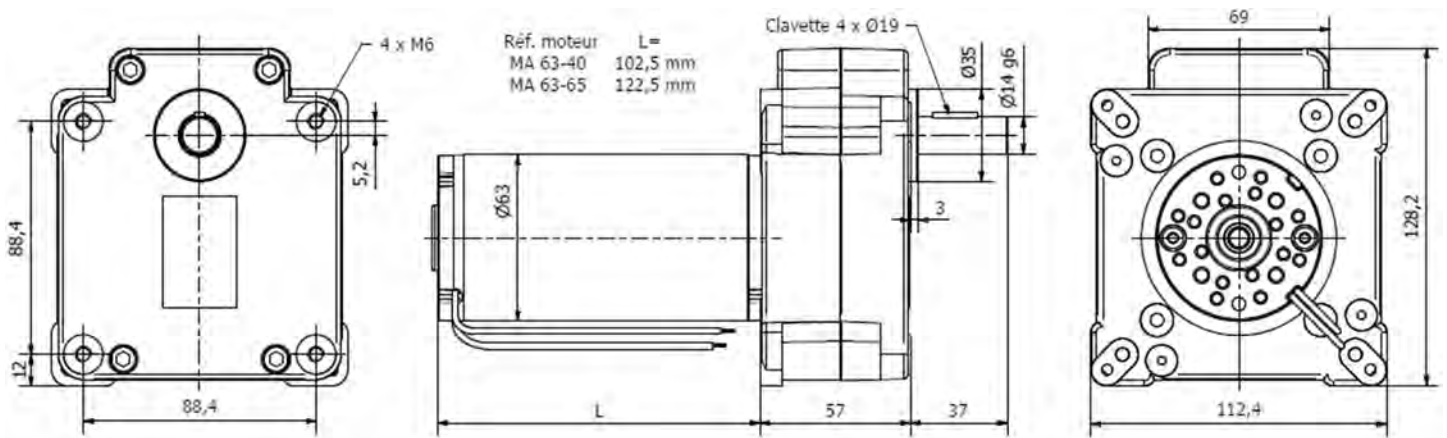
Part number		RA 63-200 001	RA 63-200 002	RA 63-200 003	RA 63-200 004	RA 63-200 005	RA 63-200 006
Input voltage (VDC)		12	24	48	12	24	48
Out. rotation speed (RPM)	Gear ration	Motor part number fitted on gear box and nominal output torque (N.m)					
		MA 63-40 001	MA 63-40 002	MA 63-40 003	MA 63-65 004	MA 63-65 005	MA 63-65 006
600	5.0÷1	0.69	0.61	0.53	1.30	1.46	1.54
375	8.0÷1	1.10	0.97	0.84	2.07	2.33	2.46
306	9.8÷1	1.35	1.19	1.03	2.54	2.86	3.02
191	15.7÷1	2.17	1.91	1.66	4.08	4.59	4.84
125	24÷1	2.99	2.64	2.29	5.63	6.33	6.68
91	33÷1	4.05	3.58	3.10	7.63	8.58	9.06
77	39÷1	4.79	4.22	3.66	9.01	10.13	10.70
64	47÷1	5.85	5.16	4.47	11.01	12.39	13.08
54	56÷1	6.90	6.09	5.28	12.99	14.61	15.42
47	64÷1	7.93	7.00	6.06	14.92	16.79	17.72
37	80÷1	8.95	7.89	6.84	16.84	18.95	20.00
31	98÷1	10.93	9.65	8.36	20.58	23.16	24.44
23	130÷1	14.52	12.81	11.10	25.00	25.00	25.00
18	167÷1	18.63	16.43	14.24	25.00	25.00	25.00
11.5	260÷1	25.00	25.00	22.19	Gear box is limited to 25.0 N.m.		25.00
9.0	335÷1	25.00	25.00	25.00			25.00
4.7	639÷1	25.00	25.00	25.00			25.00
Max. overall weight (kg)		2.3	2.3	2.3	2.7	2.7	2.7

Possible options on request

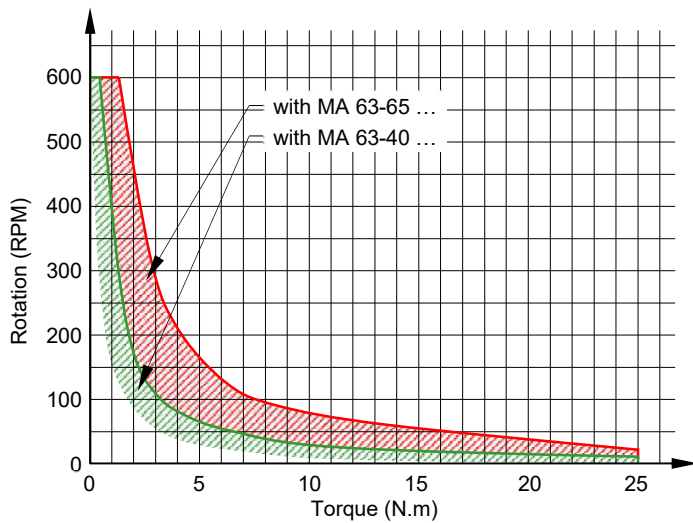
- Possibility of shaft end dedication, in line to your need.
- Possibility to supply intermediate gear ratio.
- Possibility to fit a tachometer or a braking system onto the motor.

RA 63-200 Geared Motor

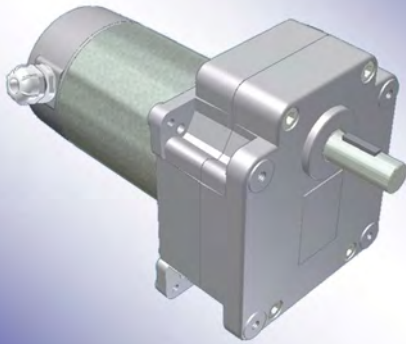
Dimensions



Performance Data



- NOTES: In any application case, the performance data can be adapted to your need.
The above performance data are subject to change by D'ISSY-MOTOR without notice.



- Permanent magnet motor.
- For MA 78-50 motor description: see previous pages following requested performance.
- Rotation direction CW seen from shaft end, the reverse may be obtained by reversing the electrical connection.
- Rotation on 2 ball bearings on output shaft.
- Zamak gear housing with parallel gear shafts from 2 to 5 stages up to 25.0 N.m max.
- Possibility of gear ratios from 5.0÷1 to 639÷1.
- Electrical connection on 2 tabs of 6.35 mm x 0.8 mm.

Technical Data

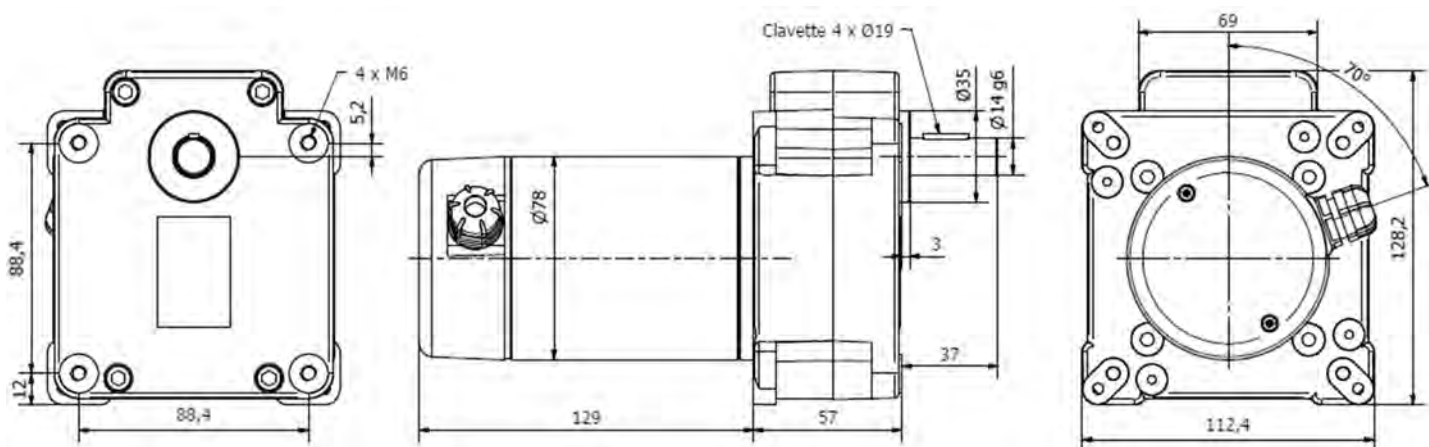
Part number		RA 78-200 001	RA 78-200 002	RA 78-200 003
Input voltage (VDC)		12	24	48
Out. rotation speed (RPM)	Gear ratio	Motor part Nr fitted and output torque (N.m)		
		MA 78-50 001	MA 78-50 002	MA 78-50 003
600	5.0÷1	1.22	1.42	1.62
375	8.0÷1	1.94	2.27	2.59
306	9.8÷1	2.39	2.78	3.18
191	15.7÷1	3.82	4.46	5.10
125	24÷1	5.27	6.15	7.03
91	33÷1	7.15	8.34	9.54
77	39÷1	8.45	9.85	11.26
64	47÷1	10.32	12.04	13.76
54	56÷1	12.17	14.20	16.23
47	64÷1	13.99	16.32	18.66
37	80÷1	15.79	18.42	21.05
31	98÷1	19.30	22.51	25.00
23	130÷1	25.00	25.00	25.00
18	167÷1	25.00	25.00	25.00
11.5	260÷1	25.00	25.00	25.00
9.0	335÷1	25.00	25.00	25.00
4.7	639÷1	25.00	25.00	25.00
Max. overall weight (kg)		2.8	2.8	2.8

Possible options on request

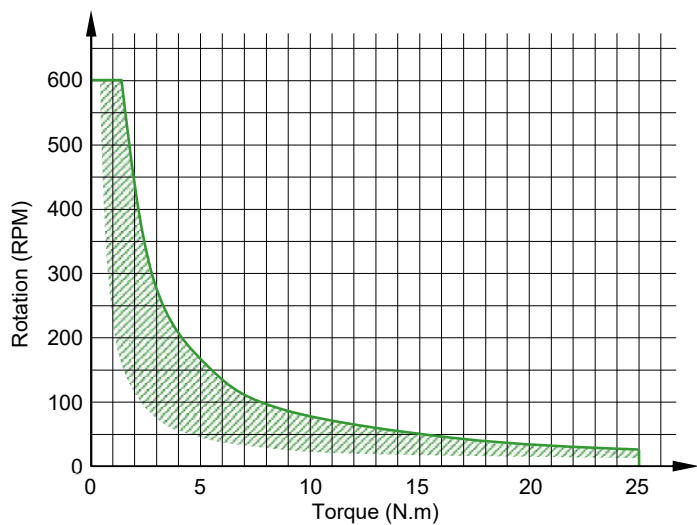
- Possibility of shaft end dedication, in line to your need.
- Possibility to supply intermediate gear ratio.
- Possibility to fit a tachometer or a braking system onto the motor.

RA 78-200 Gear Motor

Dimensions

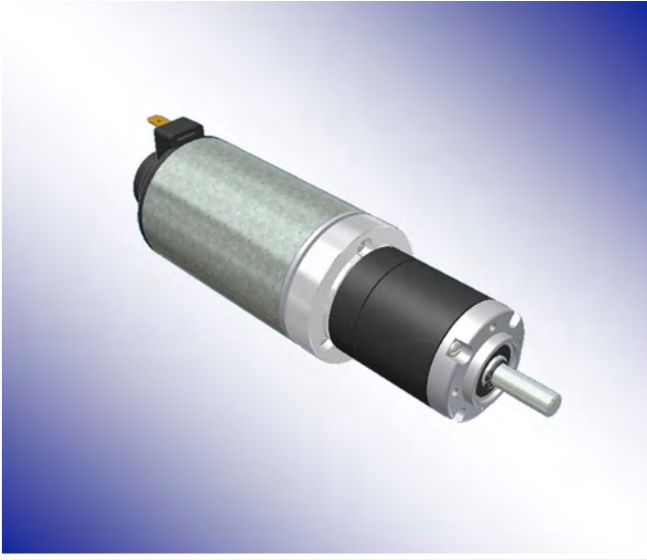


Performance Data



- NOTES:** In any application case, the performance data can be adapted to your need.
 The above performance data are subject to change by D'ISSY-MOTOR without notice.

PA 42-32 Geared Motor



- Permanent magnet motor.
- For MA 42-25 or MA 42-40 motor description: see previous pages following requested performance.
- Rotation direction CW seen from shaft end, the reverse may be obtained by reversing the electrical connection.
- Rotation on 2 ball bearings on output shaft.
- Metal gear housing with planetary gear stages from 1 to 3 stages up to 4.5 N.m max.
- Possibility of gear ratios from 4.0÷1 to 308÷1.
- Electrical connection on 2 tabs of 4.8 mm x 0.5 mm.

Technical Data

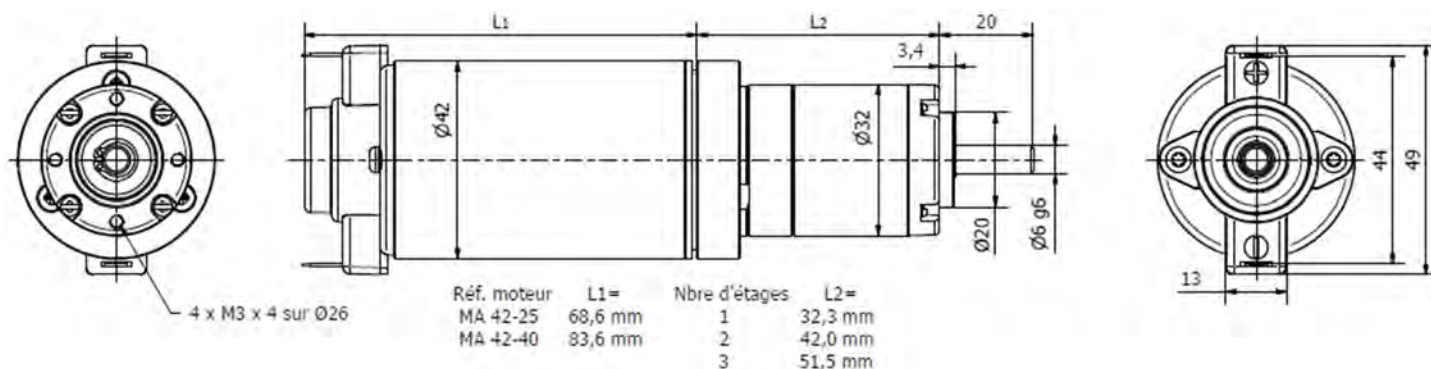
Part number	PA 42-32 001	PA 42-32 002	PA 42-32 003	PA 42-32 004	PA 42-32 005	PA 32-42 006	
Input voltage (VDC)	12	24	48	12	24	48	
Out.rotation speed (RPM)	Gear ratio	Motor part number fitted on gear box and nominal output torque (N.m)					
		MA 42-25 001	MA 42-25 002	MA 42-25 003	MA 42-40 001	MA 42-40 002	MA 42-40 003
851	3.7÷1	0.09	0.12	0.11	0.18	0.20	0.21
606	5.2÷1	0.13	0.17	0.15	0.25	0.28	0.30
463	6.8÷1	0.17	0.22	0.19	0.32	0.37	0.39
230	13.7÷1	0.33	0.41	0.37	0.62	0.70	0.74
164	19.2÷1	0.46	0.58	0.52	0.86	0.98	1.04
109	29÷1	0.69	0.87	0.78	1.30	1.48	1.56
68	46÷1	1.09	1.37	1.23	2.05	2.25	2.25
62	51÷1	1.14	1.42	1.28	2.14	2.42	2.56
40	79÷1	1.76	2.20	1.98	3.31	3.75	3.97
34	93÷1	2.08	2.60	2.34	3.89	4.41	4.50
27	115÷1	2.58	3.22	2.90	4.50	4.50	4.50
24	130÷1	2.90	3.63	3.27	4.50	4.50	4.50
21	150÷1	3.36	4.20	3.78	4.50	4.50	4.50
18.6	169÷1	3.78	4.50	4.25	4.50	Gear box is limited to 4.5 N.m.	4.50
16.2	195÷1	4.37	4.50	4.50	4.50		
13.3	236÷1	4.50	4.50	4.50			
10.2	308÷1	4.50	4.50	4.50			
Max. overall weight (kg)	0.6	0.6	0.6	0.7	0.7	0.7	

Possible options on request

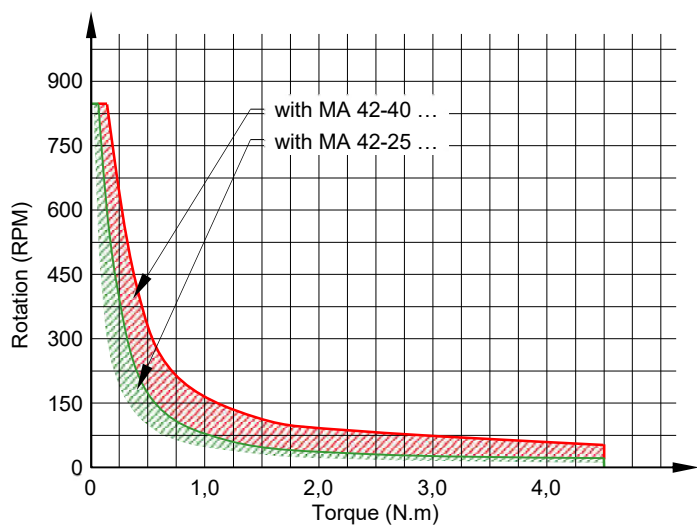
- Possibility of shaft end dedication, in line to your need and your volumes.
- Possibility to supply intermediate gear ratio, or higher gear ratio with an optional 4th planetary stage.
- Possibility to fit a tachometer or a braking system onto the motor.

PA 42-32 Geared Motor

Dimensions

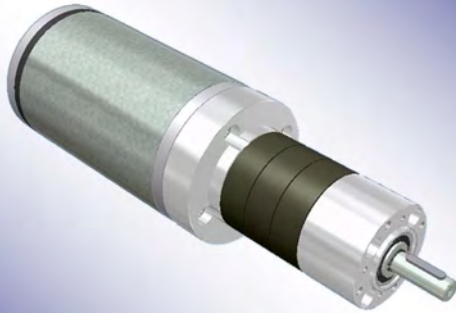


Performance Data



- NOTES: In any application case, the performance data can be adapted to your need.
The above performance data are subject to change by D'ISSY-MOTOR without notice.

PA 63-42 Geared Motor



- Permanent magnet motor.
- For MA 63-40 or MA 63-65 motor description: see previous pages following requested performance.
- Rotation direction CW seen from shaft end, the reverse may be obtained by reversing the electrical connection.
- Rotation on 2 ball bearings on output shaft.
- Metal gear housing with planetary gear stages from 1 to 3 stages up to 15.0 N.m max.
- Possibility of gear ratios from 3.7÷1 to 393÷1.

Technical Data

Part number		PA 63-42 001	PA 63-42 002	PA 63-42 003	PA 63-42 004	PA 63-42 005	PA 63-42 006
Input voltage (VDC)		12	24	48	12	24	48
Out. rotation speed (RPM)	Gear ratio	Motor part number fitted on gear box and nominal output torque (N.m)					
		MA 63-40 001	MA 63-40 002	MA 63-40 003	MA 63-65 004	MA 63-65 005	MA 63-65 006
658	3.7÷1	0.50	0.44	0.38	0.93	1.05	1.11
448	5.4÷1	0.73	0.64	0.56	1.37	1.54	1.63
366	6.6÷1	0.89	0.79	0.68	1.68	1.89	1.99
278	8.6÷1	1.17	1.04	0.90	2.21	2.49	2.62
177	14÷1	1.73	1.52	1.32	3.25	3.65	3.86
97	25÷1	3.14	2.77	2.40	5.92	6.66	7.03
71	34÷1	4.32	3.82	3.31	7.50	7.50	7.50
54	45÷1	5.70	5.03	4.36	7.50	7.50	7.50
41	58÷1	7.42	6.55	5.68	7.50	7.50	7.50
36	67÷1	7.98	7.04	6.10	15.00	15.00	15.00
26	91÷1	10.87	9.59	8.31	15.00	15.00	15.00
21	115÷1	13.66	12.05	10.44	15.00	15.00	15.00
17	145÷1	15.00	15.00	13.23	Gear box is limited to 15.0 N.m.		
14	166÷1	15.00	15.00	15.00			
10	232÷1	15.00	15.00	15.00			
8.0	302÷1	15.00	15.00	15.00			
6.1	393÷1	15.00	15.00	15.00			
Max. overall weight (kg)		1.7	1.7	1.7	2.1	2.1	2.1

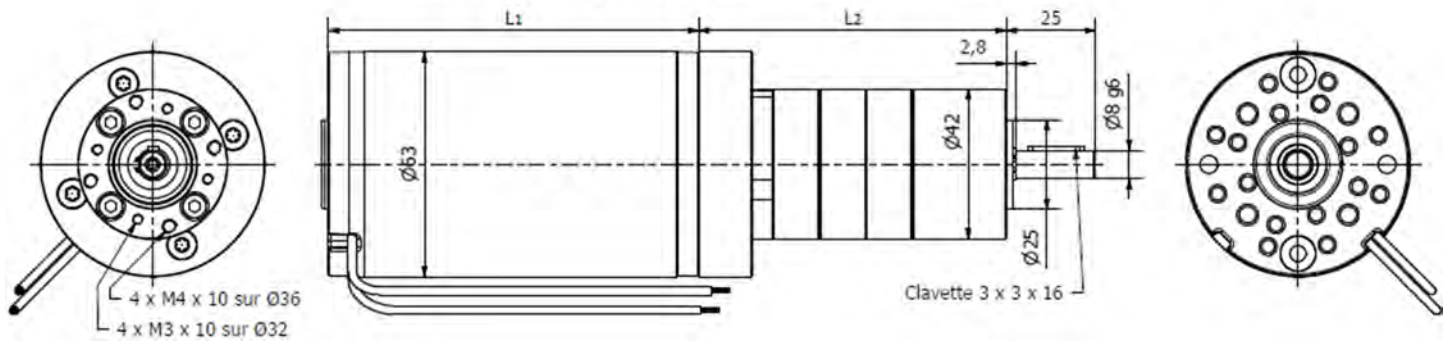
Possible options on request

- Possibility of shaft end dedication, in line to your need and your volumes.
- Possibility to supply intermediate gear ratio, or higher gear ratio with an optional 4th planetary stage.
- Possibility to fit a tachometer or a braking system onto the motor.

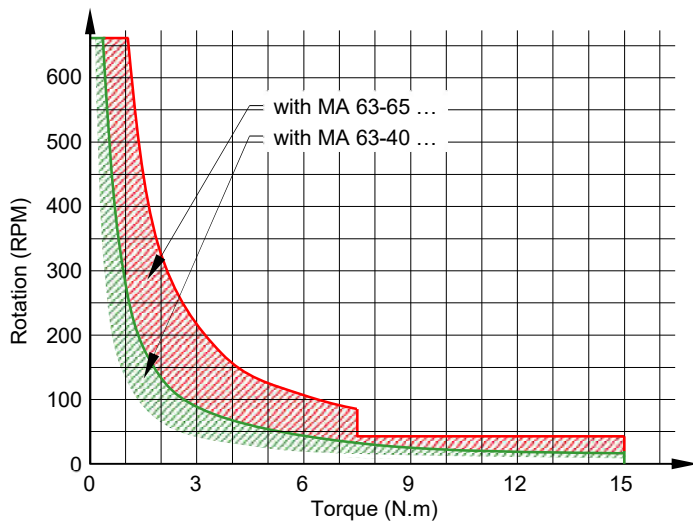
PA 63-42 Geared Motor

Dimensions

Réf. moteur	L1=	Nbre d'étages	L2=
MA 63-40	104,0 mm	1	60,2 mm
MA 63-65	124,0 mm	2	73,3 mm
		3	86,3 mm



Performance Data



- NOTES: In any application case, the performance data can be adapted to your need.
The above performance data are subject to change by D'ISSY-MOTOR without notice.

PA 78-52 Geared Motor

- Permanent magnet motor.
- For MA 78-50 or MA 78-100 motor description: see previous pages following requested performance.
- Rotation direction CW seen from shaft end, the reverse may be obtained by reversing the electrical connection.
- Rotation on 2 ball bearings on output shaft.
- Metal gear housing with planetary gear stages from 1 to 3 stages up to 25.0 N.m max.
- Possibility of gear ratios from 4÷1 to 393÷1.



Technical Data

Part number		PA 78-52 001	PA 78-52 002	PA 78-52 003	PA 78-52 004	PA 78-52 005	PA 78-52 006
Input voltage (VDC)		12	24	48	12	24	48
Out. rotation speed (RPM)	Gear ratio	Motor part number fitted on gear box and nominal output torque (N.m)					
		MA 78-50 001	MA 78-50 002	MA 78-50 003	MA 78-100 001	MA 78-100 002	MA 78-100 003
658	3.7÷1	0.88	1.02	1.17	1.75	2.04	2.19
448	5.4÷1	1.29	1.50	1.72	2.57	3.00	3.22
366	6.6÷1	1.57	1.83	2.10	3.14	3.67	3.93
278	8.6÷1	2.07	2.42	2.76	4.00	4.00	4.00
177	14÷1	3.04	3.55	4.06	6.09	7.10	7.61
97	25÷1	5.55	6.47	7.40	11.09	12.00	12.00
71	34÷1	7.63	8.90	10.18	12.00	12.00	12.00
54	45÷1	10.06	11.73	12.00	12.00	12.00	
41	58÷1	12.00	12.00	12.00			
36	67÷1	14.09	16.43	18.78	25.00	25.00	25.00
26	91÷1	19.19	22.38	24.00	25.00	25.00	25.00
21	115÷1	24.10	25.00	25.00	25.00		
17	145÷1	25.00	25.00	25.00			
14	166÷1	25.00	25.00	25.00			
10	232÷1	25.00	25.00	25.00			
8.0	302÷1	25.00	25.00	25.00			
6.1	393÷1	25.00	25.00	25.00			
Max. overall weight (kg)		3.0	3.0	3.0	4.3	4.3	4.3

Fitting model MB 78-100 motor is unnecessary for these gear ratios, because gear box is limited to 25 N.m.

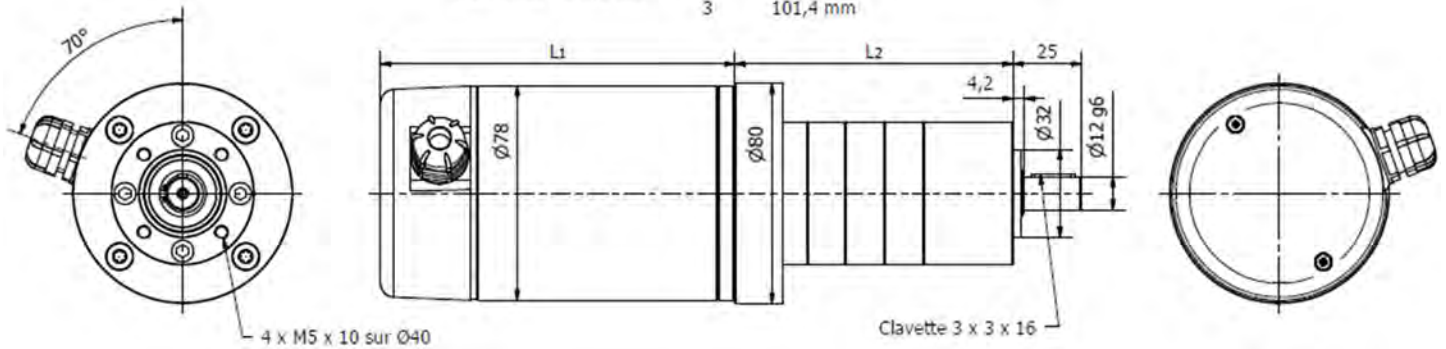
Possible options on request

- Possibility of shaft end dedication, in line to your need and your volumes.
- Possibility to supply intermediate gear ratio, or higher gear ratio with an optional 4th planetary stage.
- Possibility to fit a tachometer or a braking system onto the motor.

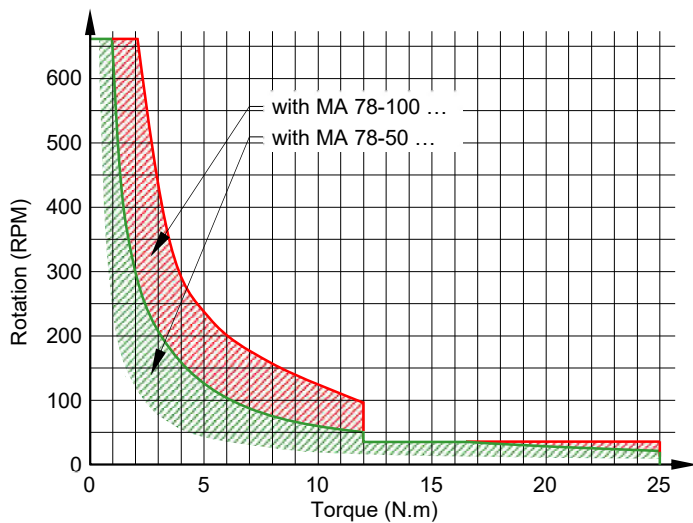
PA 78-52 Geared Motor

Dimensions

Réf. moteur	L1=	Nbre d'étages	L2=
MA 78-50	129,0 mm	1	73,1 mm
MA 78-100	169,0 mm	2	87,3 mm
		3	101,4 mm

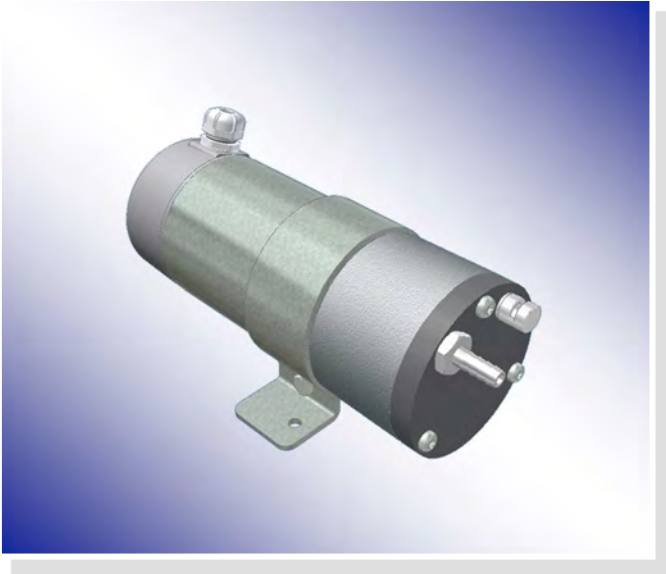


Performance Data



- NOTES: In any application case, the performance data can be adapted to your need.
The above performance data are subject to change by D'ISSY-MOTOR without notice.

CA 78-50 DC Electric Compressor



- Permanent magnet motor.
- Rotary vane compressor.
- Rotation on 2 ball bearings.
- Electric connection on 2 tabs 6.3 x 0.8 mm.
- Discharge connection Ø8 mm.
- Oil port to the suction.
- Chamber of compression molded iron cast aluminum.
- Rotor barrel in steel and blades in Celoron®.
- Sealing class: IP50.
- Insulation class: B.
- Brush life time up to 3,000 h depending use cycles.

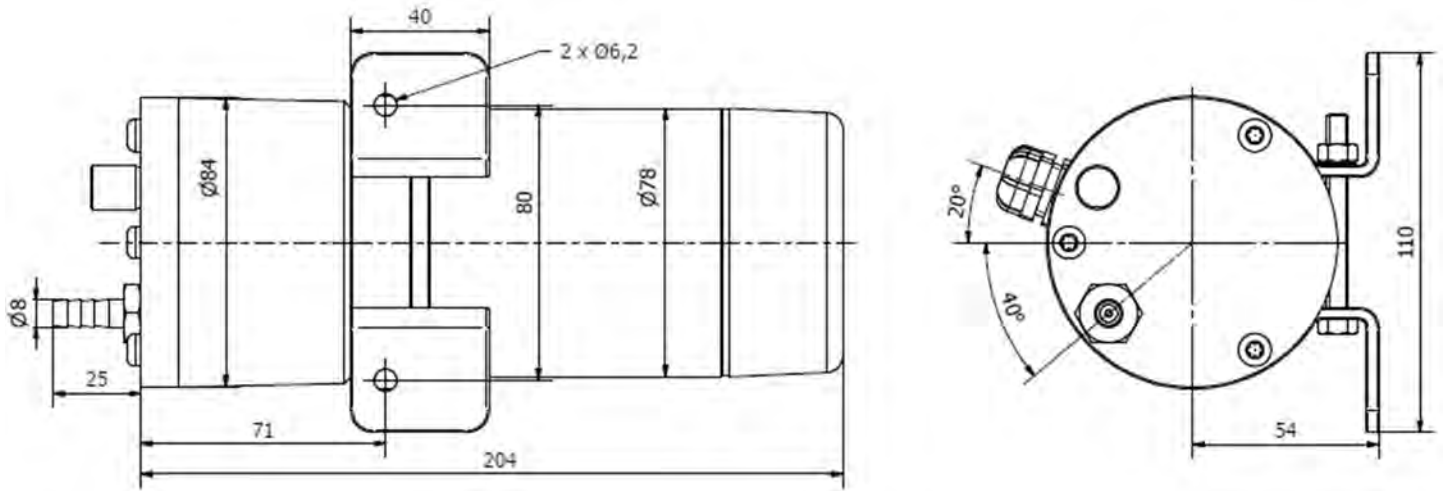
Technical Data						
Part number	CA 78-50 001	CA 78-50 002	CA 78-50 003	CA 78-50 004	CA 78-50 005	CA 78-50 006
Input voltage (VDC)	12	24	48	72	120	230
Air volume flow (m ³ /h)	Pressure discharge (kPa) (1 bar = 100 kPa)					
9.0	10	13	15	15	13	15
7.8	35	37	45	43	43	40
6.0	80	86	87	85	82	85
4.8	90	95	100	100	100	100
0	110	120	130	125	125	125
No load amperage (A)	25	12	6.0	4.5	3.0	1.6
Overall weight (kg)	3.6	3.6	3.6	3.6	3.6	3.6

Possible options on request

- Possibility to fit a suction filter for polluted atmosphere.
- Possibility to fit any other discharge connection, in line to your need.
- Possibility to fit a metal back cover to protect shocks.
- Possibility to fit your electrical connector instead of integrated Fast-on® tabs.

CA 78-50 DC Electric Compressor

Dimensions



- NOTES: The above characteristics are subject to change by D'ISSY-MOTOR without notice.

In all fields of activity, according to the volume targets of your project, D'ISSY-MOTOR, with its expertise and experience can adapt or create a dedicated product for your application.

Building:

- Sliding Door Motor



- Shutters Automation



- Gates Automation



Industry:

- Rotating Siren



- Peristaltic Pump Motor



- Was Vacuum Pump



Automotive:

- Accessory Fan



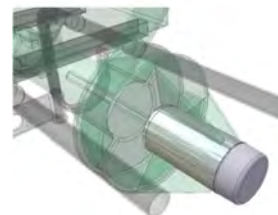
Railways:

- Sandbox Compressor



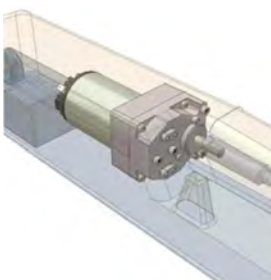
Agriculture:

- Animal Feeder



House:

- Pool Cover Roller



- Blind Automation



As well as ...

- Pool Cleaning Automate
- Agricultural Seeder
- TV Screen Orientation
- MV Switch Automation
- Parabola Automation
- Pool Sliding Closer Automation
- Etc. ...



DC MOTOR

**24, Route de Grury | L'Étang-Neuf | F-71760 ISSY-L'ÉVÊQUE
Téléphone : +33 3 85 53 87 61 | Mobile : +33 6 47 46 48 06**

<https://dc-motor.fr/en/dc-motor-en/>