

## RA 78-200 GEARED MOTOR

### DESCRIPTION

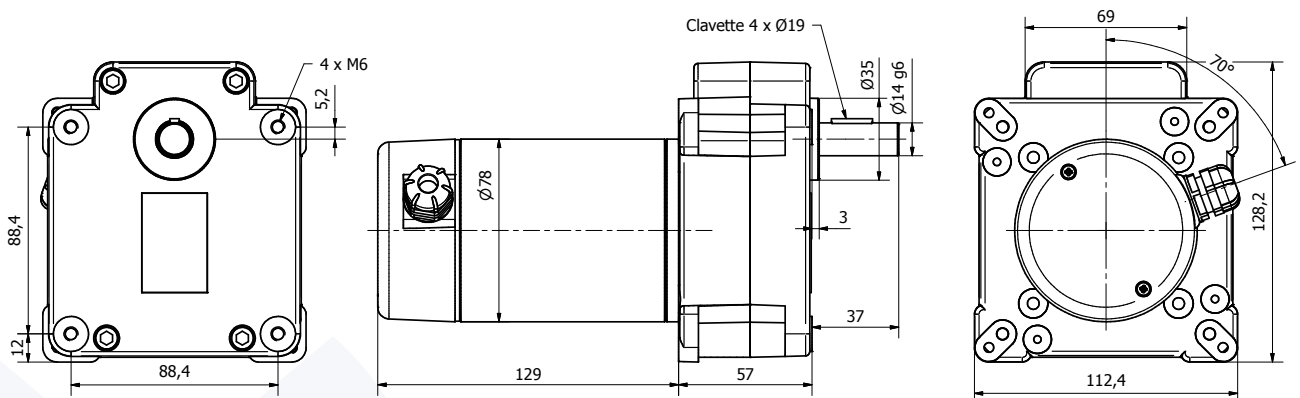
- Permanent magnet motor.
- For MA 78-50 motor description: see previous pages following requested performance.
- Rotation direction CW seen from shaft end, the reverse may be obtained by reversing the electrical connection.

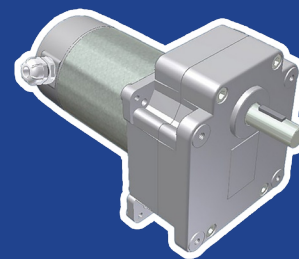
- Rotation on 2 ball bearings on output shaft.
- Zamak gear housing with parallel gear shafts from 2 to 5 stages up to 25.0 N.m max.
- Possibility of gear ratios from 5.0÷1 to 639÷1.
- Electrical connection on 2 tabs of 6.35 mm x 0.8 mm.

### OPTIONS

- Possibility of shaft end dedication, in line to your need.
- Possibility to supply intermediate gear ratio.
- Possibility to fit a tachometer or a braking system onto the motor.

### 2D PLAN





## RA 78-200 GEARED MOTOR

### CHARACTERISTICS



Part number		RA 78-200 001	RA 78-200 002	RA 78-200 003
Input voltage (VDC)		12	24	48
Out. rotation speed (RPM)	Gear ratio	Motor part number fitted on gear box and nominal output torque (N.m)		
		MA 78-50 001	MA 78-50 002	MA 78-50 003
600	5,0÷1	1,22	1,42	1,62
375	8,0÷1	1,94	2,27	2,59
306	9,8÷1	2,39	2,78	3,18
191	15,7÷1	3,82	4,46	5,10
125	24÷1	5,27	6,15	7,03
91	33÷1	7,15	8,34	9,54
77	39÷1	8,45	9,85	11,26
64	47÷1	10,32	12,04	13,76
54	56÷1	12,17	14,20	16,23
47	64÷1	13,99	16,32	18,66
37	80÷1	15,79	18,42	21,05
31	98÷1	19,30	22,51	25,00
23	130÷1	25,00	25,00	25,00
18	167÷1	25,00	25,00	25,00
11,5	260÷1	25,00	25,00	25,00
9,0	335÷1	25,00	25,00	25,00
4,7	639÷1	25,00	25,00	25,00
Max. overall weight (kg)		2,8	2,8	2,8

### PERFORMANCES

