

## RA 63-90 GEARED MOTOR

### DESCRIPTION

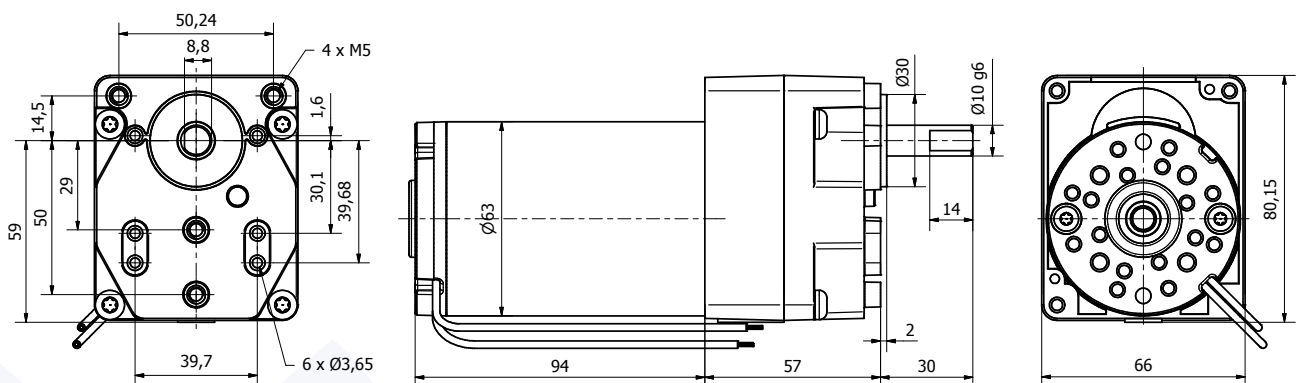
- Permanent magnet motor.
- For MA 63-40 motor description: see previous pages following requested performance.
- Rotation direction CW seen from shaft end, the reverse may be obtained by reversing the electrical connection.

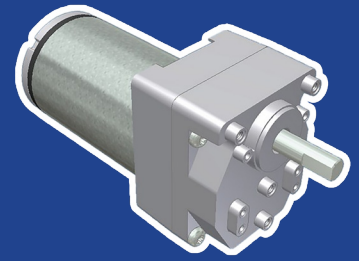
- Rotation on 2 ball bearings on output shaft.
- Zamak gear housing with parallel gear shafts from 2 to 6 stages up to 8.0 N.m max.
- Possibility of gear ratios from 3.7÷1 to 2880÷1 in a small dimension.

### OPTIONS

- Possibility of shaft end dedication, in line to your need.
- Possibility to supply intermediate gear ratio.
- Possibility to fit a tachometer or a braking system onto the motor.

### 2D PLAN





## RA 63-90 GEARED MOTOR

### CHARACTERISTICS



Part number		RA 63-90 001	RA 63-90 002	RA 63-90 003	RA 63-90 004
Input voltage (VDC)		12	24	48	110
Out. rotation speed (RPM)	Gear ratio	Motor part number fitted on gear box and nominal output torque (N.m)			
		MA 63-40 001	MA 63-40 002	MA 63-40 003	MA 63-40 004
811	3,7÷1	0,51	0,45	0,39	0,42
500	6,0÷1	0,83	0,73	0,63	0,68
250	12,0÷1	1,65	1,46	1,26	1,36
127	23,6÷1	2,92	2,58	2,24	2,41
81	36,9÷1	4,57	4,04	3,50	3,77
67	45,0÷1	5,58	4,92	4,27	4,59
50	60,0÷1	7,44	6,56	5,69	6,12
35	86,4÷1	8,00	8,00	7,37	7,94
28	108÷1	8,00	8,00	8,00	8,00
22	135÷1	8,00	8,00	8,00	8,00
19	160÷1	8,00	8,00	8,00	8,00
15	200÷1	8,00	8,00	8,00	8,00
10,5	288÷1	8,00	8,00	8,00	8,00
7,5	400÷1	8,00	8,00	8,00	8,00
5,0	600÷1	8,00	8,00	8,00	8,00
2,9	1024÷1	8,00	8,00	8,00	8,00
1,0	2880÷1	8,00	8,00	8,00	8,00
<b>Max. overall weight (kg)</b>		1,8	1,8	1,8	1,8

### PERFORMANCES

