

RA 42-50 GEARED MOTOR

DESCRIPTION

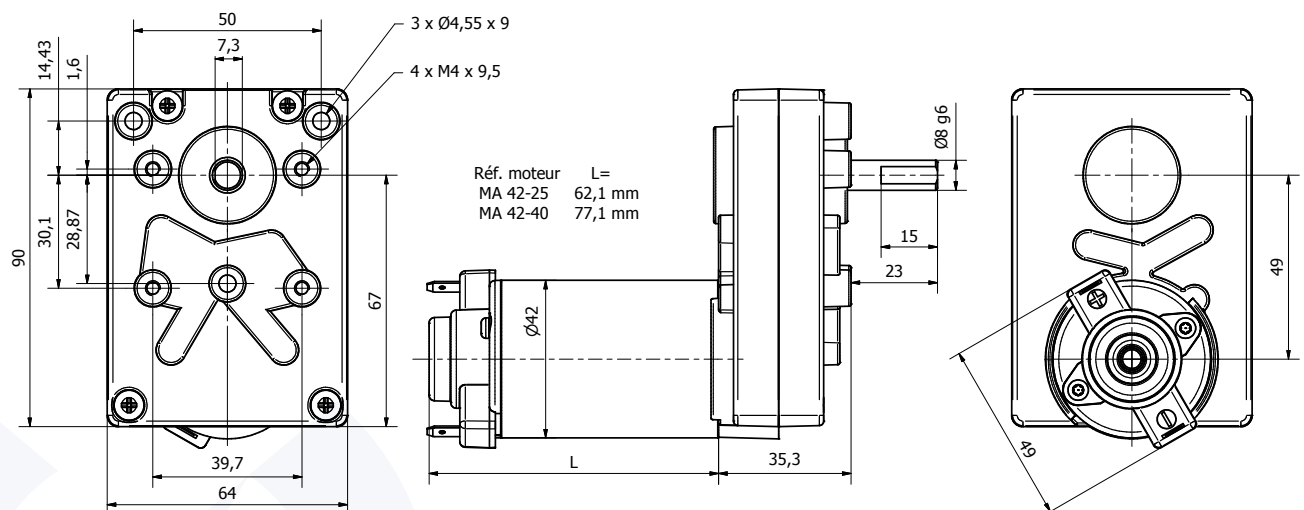
- Permanent magnet motor.
- For MA 42-25 or MA 42-40 motor description: see previous pages following requested performance.
- Rotation direction CW seen from shaft end, the reverse may be obtained by reversing the electrical connection.

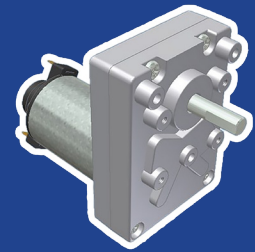
- Rotation on 2 ball bearings on output shaft.
- Zamak gear housing with parallel gear shafts from 3 to 5 stages up to 5.5 N.m max.
- Possibility of gear ratios from 10.5÷1 to 1480÷1 with 2 shafts in option.
- Electrical connection on 2 tabs of 4.8 mm x 0.5 mm.

OPTIONS

- Possibility of shaft end dedication, in line to your need, with possibility of 2 opposite shaft ends.
- Possibility to supply intermediate gear ratio.
- Possibility to fit a tachometer or a braking system onto the motor.

2D PLAN





RA 42-50 GEARED MOTOR

CHARACTERISTICS



Part number		RA 42-50 001	RA 42-50 002	RA 42-50 003	RA 42-50 004	RA 42-50 005	RA 42-50 006
Input voltage (VDC)		12	24	48	12	24	48
Out. rotation speed (RPM)	Gear ratio	Motor part number fitted on gear box and nominal output torque (N.m)					
		MA 42-25 001	MA 42-25 002	MA 42-25 003	MA 42-40 001	MA 42-40 002	MA 42-40 003
300	10,5÷1	0,24	0,31	0,28	0,46	0,52	0,55
153	20,6÷1	0,48	0,60	0,54	0,90	1,02	1,08
88	35,6÷1	0,83	1,04	0,93	1,56	1,76	1,87
65	48,4÷1	1,13	1,41	1,27	2,12	2,40	2,54
44	71,6÷1	1,67	2,09	1,88	3,13	3,55	3,76
35	90,5÷1	2,11	2,64	2,37	3,96	4,49	4,75
23	138÷1	2,89	3,62	3,25	5,42	5,50	5,50
18	173÷1	3,63	4,54	4,09	5,50	5,50	5,50
14	232÷1	4,87	5,50	5,48	5,50		5,50
10;5	300÷1	5,50	5,50	5,50			
7,8	405÷1	5,50	5,50	5,50			
6,3	498÷1	5,50	5,50	5,50			
5,2	606÷1	5,50	5,50	5,50			
4,4	709÷1	5,50	5,50	5,50			
3,7	847÷1	5,50	5,50	5,50			
2,8	1133÷1	5,50	5,50	5,50			
2,1	1480÷1	5,50	5,50	5,50			
Max. overall weight (kg)		0,8	0,8	0,8	0,9	0,9	0,9

Fitting model MA 42-40 motor is unnecessary for these gear ratios, because gear box is limited to 5.5 N.m.

PERFORMANCES

