

RA 42-15 GEARED MOTOR

DESCRIPTION

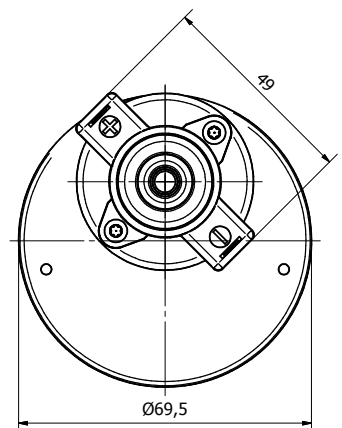
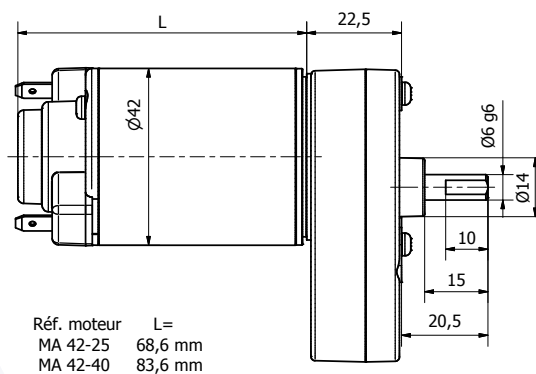
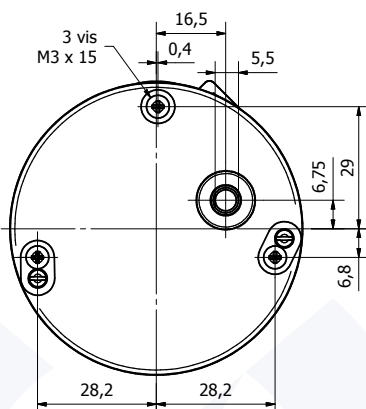
- Permanent magnet motor.
- For MA 42-25 or MA 42-40 motor description: see previous pages following requested performance.
- Rotation direction CW seen from shaft end, the reverse may be obtained by reversing the electrical connection.

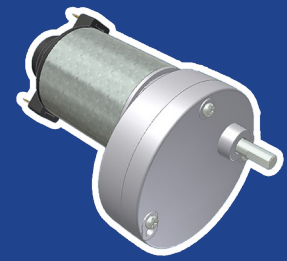
- Rotation on 2 bearings made of sintered bronze.
- Zamak gear housing with parallel gear shafts from 2 to 6 stages up to 1.5 N.m max.
- Possibility of great gear ratios from 10÷1 to 7200÷1.
- Electrical connection on 2 tabs of 4.8 mm x 0.5 mm.

OPTIONS

- Possibility of shaft end dedication, in line to your need.
- Possibility to supply intermediate gear ratio.
- Possibility to fit a tachometer or a braking system onto the motor.

2D PLAN





RA 42-15 GEARED MOTOR

CHARACTERISTICS



Part number		RA 42-15 001	RA 42-15 002	RA 42-15 003	RA 42-15 004	RA 42-15 005	RA 42-15 006
Input voltage (VDC)		12	24	48	12	24	48
Out. rotation speed (RPM)	Gear ratio	Motor part number fitted on gear box and nominal output torque (N.m)					
		MA 42-25 004	MA 42-25 005	MA 42-25 006	MA 42-40 004	MA 42-40 005	MA 42-40 006
240	10÷1	0,22	0,23	0,24	0,32	0,33	0,31
160	15÷1	0,33	0,35	0,36	0,49	0,50	0,46
80	30÷1	0,66	0,70	0,73	0,97	1,00	0,92
63	38÷1	0,75	0,80	0,83	1,11	1,14	1,05
43	56÷1	1,10	1,18	1,22	1,50	1,50	1,50
32	75÷1	1,48	1,50	1,50	1,50	Fitting model MA 42-40 motor is unnecessary for these gear ratios, because gear box is limited to 1.5 N.m.	
26	94÷1	1,50	1,50	1,50			
21	113÷1	1,50	1,50	1,50			
16	150÷1	1,50	1,50	1,50			
12	200÷1	1,50	1,50	1,50			
9,6	250÷1	1,50	1,50	1,50			
6,7	360÷1	1,50	1,50	1,50			
4,3	563÷1	1,50	1,50	1,50			
2,5	960÷1	1,50	1,50	1,50			
1,25	1920÷1	1,50	1,50	1,50			
0,55	4320÷1	1,50	1,50	1,50			
0,33	7200÷1	1,50	1,50	1,50			
Max. overall weight (kg)		0,6	0,6	0,6	0,7	0,7	0,7

PERFORMANCES

