

PA 63-42 GEARED MOTOR

DESCRIPTION

- Permanent magnet motor.
- For MA 63-40 or MA 63-65 motor description: see previous pages following requested performance.
- Rotation direction CW seen from shaft end, the reverse may be obtained by reversing the electrical connection.

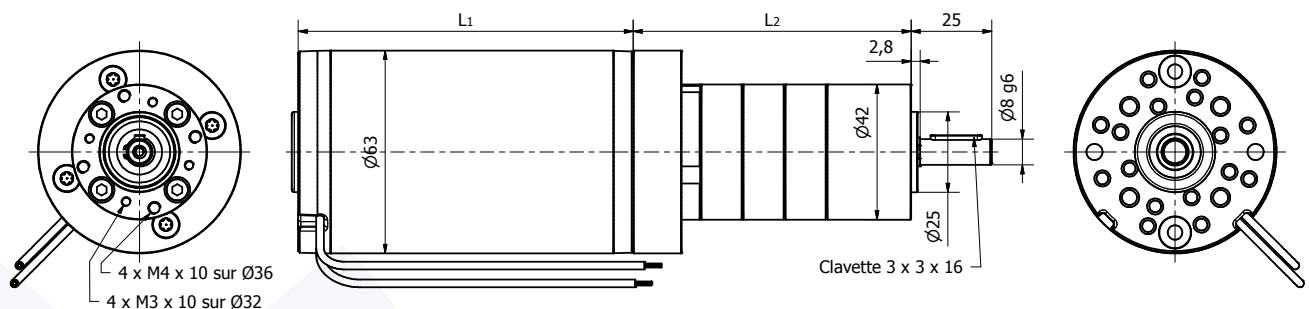
- Rotation on 2 ball bearings on output shaft.
- Metal gear housing with planetary gear stages from 1 to 3 stages up to 15.0 N.m max.
- Possibility of gear ratios from 3.7÷1 to 393÷1.

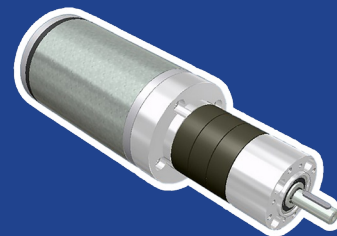
OPTIONS

- Possibility of shaft end dedication, in line to your need and your volumes.
- Possibility to supply intermediate gear ratio, or higher gear ratio with an optional 4th planetary stage.
- Possibility to fit a tachometer or a braking system onto the motor.

2D PLAN

Réf. moteur	L ₁ =	Nbre d'étages	L ₂ =
MA 63-40	104,0 mm	1	60,2 mm
MA 63-65	124,0 mm	2	73,3 mm
		3	86,3 mm





PA 63-42 GEARED MOTOR

CHARACTERISTICS



Part number		PA 63-42 001	PA 63-42 002	PA 63-42 003	PA 63-42 004	PA 63-42 005	PA 63-42 006
Input voltage (VDC)		12	24	48	12	24	48
Out. rotation speed (RPM)	Gear ratio	Motor part number fitted on gear box and nominal output torque (N.m)					
		MA 63-40 001	MA 63-40 002	MA 63-40 003	MA 63-65 004	MA 63-65 005	MA 63-65 006
658	3,7÷1	0,50	0,44	0,38	0,93	1,05	1,11
448	5,4÷1	0,73	0,64	0,56	1,37	1,54	1,63
366	6,6÷1	0,89	0,79	0,68	1,68	1,89	1,99
278	8,6÷1	1,17	1,04	0,90	2,21	2,49	2,62
177	14÷1	1,73	1,52	1,32	3,25	3,65	3,86
97	25÷1	3,14	2,77	2,40	5,92	6,66	7,03
71	34÷1	4,32	3,82	3,31	7,50	7,50	7,50
54	45÷1	5,70	5,03	4,36	7,50	7,50	7,50
41	58÷1	7,42	6,55	5,68	7,50	7,50	7,50
36	67÷1	7,98	7,04	6,10	15,00	15,00	15,00
26	91÷1	10,87	9,59	8,31	15,00	15,00	15,00
21	115÷1	13,66	12,05	10,44	15,00	15,00	15,00
17	145÷1	15,00	15,00	13,23	Gear box is limited to 15.0 N.m.		15,00
14	166÷1	15,00	15,00	15,00			15,00
10	232÷1	15,00	15,00	15,00			15,00
8,0	302÷1	15,00	15,00	15,00			15,00
6,1	393÷1	15,00	15,00	15,00			15,00
Max. overall weight (kg)		1,7	1,7	1,7	2,1	2,1	2,1

PERFORMANCES

