

PA 42-32 GEARED MOTOR

DESCRIPTION

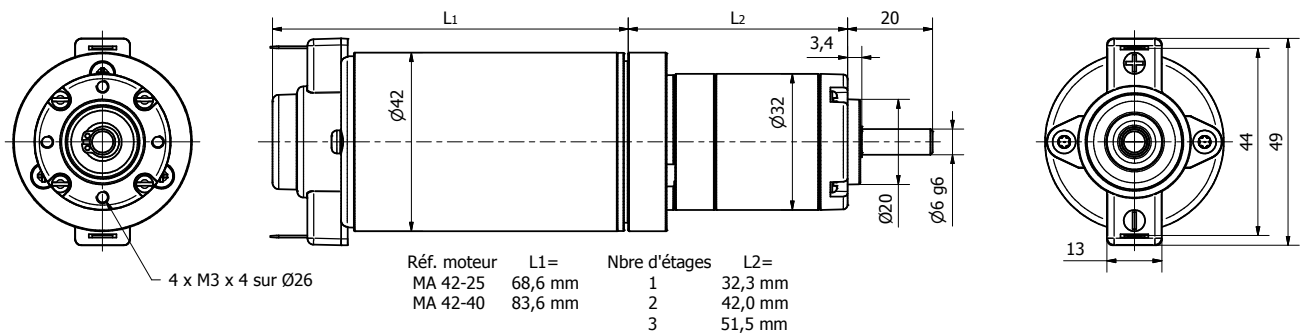
- Permanent magnet motor.
- For MA 42-25 or MA 42-40 motor description: see previous pages following requested performance.
- Rotation direction CW seen from shaft end, the reverse may be obtained by reversing the electrical connection.

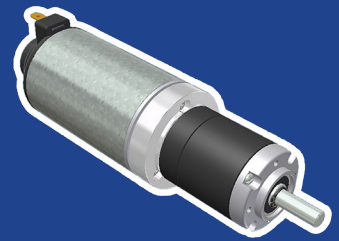
- Rotation on 2 ball bearings on output shaft.
- Metal gear housing with planetary gear stages from 1 to 3 stages up to 4.5 N.m max.
- Possibility of gear ratios from 4.0÷1 to 308÷1.
- Electrical connection on 2 tabs of 4.8 mm x 0.5 mm.

OPTIONS

- Possibility of shaft end dedication, in line to your need and your volumes.
- Possibility to supply intermediate gear ratio, or higher gear ratio with an optional 4th planetary stage.
- Possibility to fit a tachometer or a braking system onto the motor.

2D PLAN





PA 42-32 GEARED MOTOR

CHARACTERISTICS



Part number		PA 42-32 001	PA 42-32 002	PA 42-32 003	PA 42-32 004	PA 42-32 005	PA 42-32 006
Input voltage (VDC)		12	24	48	12	24	48
Out. rotation speed (RPM)	Gear ratio	Motor part number fitted on gear box and nominal output torque (N.m)					
		MA 42-25 001	MA 42-25 002	MA 42-25 003	MA 42-40 001	MA 42-40 002	MA 42-40 003
851	3,7÷1	0,09	0,12	0,11	0,18	0,20	0,21
606	5,2÷1	0,13	0,17	0,15	0,25	0,28	0,30
463	6,8÷1	0,17	0,22	0,19	0,32	0,37	0,39
230	13,7÷1	0,33	0,41	0,37	0,62	0,70	0,74
164	19,2÷1	0,46	0,58	0,52	0,86	0,98	1,04
109	29÷1	0,69	0,87	0,78	1,30	1,48	1,56
68	46÷1	1,09	1,37	1,23	2,05	2,25	2,25
62	51÷1	1,14	1,42	1,28	2,14	2,42	2,56
40	79÷1	1,76	2,20	1,98	3,31	3,75	3,97
34	93÷1	2,08	2,60	2,34	3,89	4,41	4,50
27	115÷1	2,58	3,22	2,90	4,50	4,50	4,50
24	130÷1	2,90	3,63	3,27	4,50	4,50	4,50
21	150÷1	3,36	4,20	3,78	4,50	4,50	4,50
18,6	169÷1	3,78	4,50	4,25	4,50		4,50
16,2	195÷1	4,37	4,50	4,50	4,50		
13,3	236÷1	4,50	4,50	4,50			
10,2	308÷1	4,50	4,50	4,50			
Max. overall weight (kg)		0,6	0,6	0,6	0,7	0,7	0,7

Gear box is limited to 4.5 N.m.

PERFORMANCES

