

## MB 63-25 MOTOR

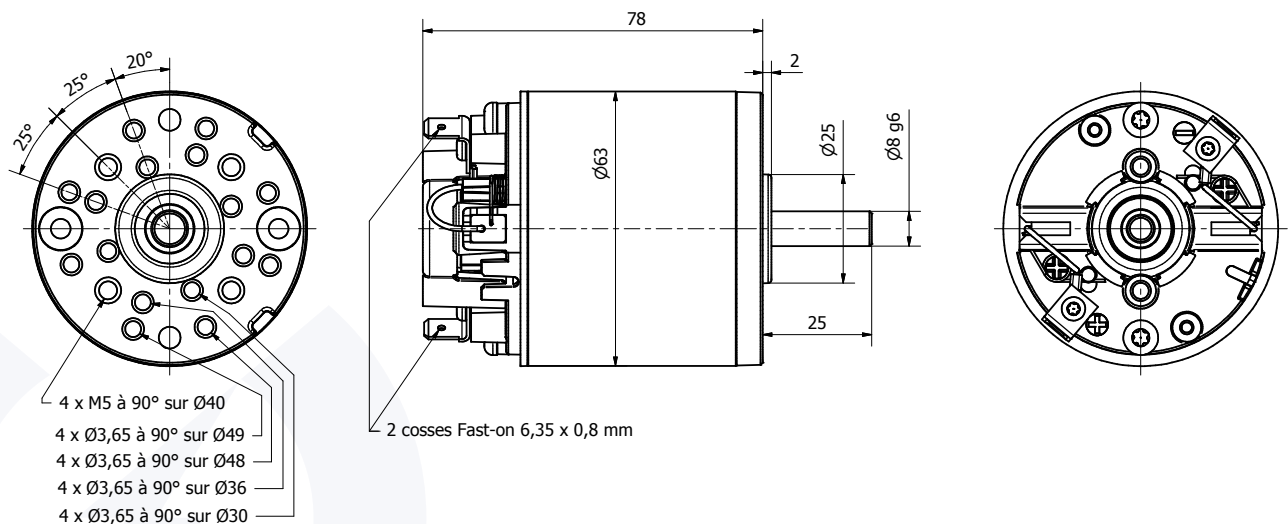
### DESCRIPTION

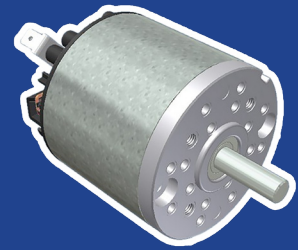
- Permanent magnet motor, economical design.
- Rotation direction CW seen from shaft end, the reverse may be obtained by reversing the electrical connection.
- Rotation on 2 ball bearings.
- Electrical connection on 2 tabs of 6.3 x 0.8 mm.
- Open motor fitted with Zamak front flange.
- Sealing Class: IP00.
- Insulation Class: B.
- Brush life time up to 3000 h depending use cycles.

### OPTIONS

- Any other input voltage is possible up to 240VDC.
- Any other rotation speed between 1000 and 6500 RPM is possible on request.
- Possibility of other flange, in line to your need.
- Possibility of shaft end dedication, in line to your need.
- Possibility to adapt a second output shaft on the opposite side of regular output shaft.
- Possibility to fit a tachometer.
- Possibility to fit a braking system.
- Possibility to fit a parallel gear reducer or planetary gear reducer (refer following pages).

## 2D PLAN





## MB 63-25 MOTOR

### CHARACTERISTICS



Part number	MB 63-25 001	MB 63-25 002	MB 63-25 003	MB 63-25 004	MB 63-25 005	MB 63-25 006
Input voltage (VDC)	12	24	48	12	24	48
No load rotation speed (RPM)	3400	3500	3600	3950	4050	4000
No load amperage (A)	0,7	0,4	0,2	1,0	0,5	0,2
Nominal rotation speed (RPM)	2940	3040	3100	3410	3500	3500
Nominal torque (N.cm)	11	11	13	13	14	13
Nominal output wattage (W)	35	37	41	48	50	47
Nominal amperage (A)	4,6	2,3	1,3	6,3	3,3	1,5
Nominal input wattage (W)	55	56	61	76	79	71
Nominal efficiency (%)	64	65	67	63	63	66
Locked rotor torque (N.cm)	83	87	93	98	100	103
Locked rotor amperage (A)	29	15	8,1	40	21	10
Rotor inertia (g.cm <sup>2</sup> )	320	318	318	318	315	315
Max. weight (kg)	0,75	0,75	0,75	0,75	0,75	0,75

### PERFORMANCES

