

MA 78-50 MOTOR

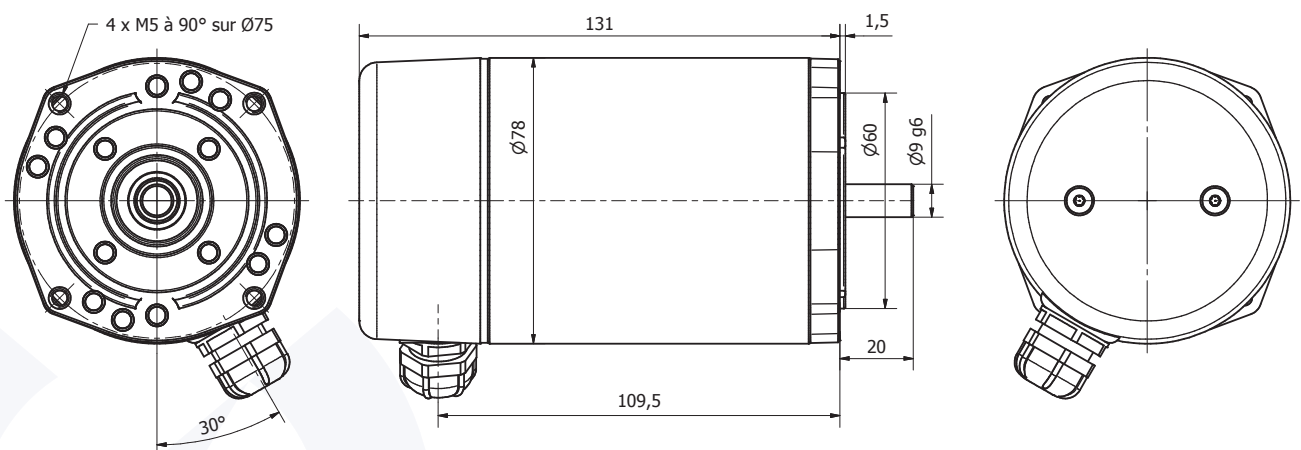
DESCRIPTION

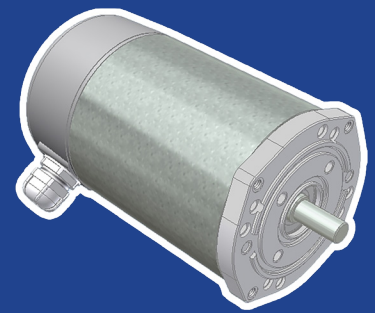
- Permanent magnet motor.
- Rotation direction CW seen from shaft end, the reverse may be obtained by reversing the electrical connection.
- Rotation on 2 ball bearings.
- Electrical connection on 2 tabs of 6.3 x 0.8 mm.
- Open motor with Zamak 63B14 front flange.
- Shown with optional protection rear cover.
- Sealing class: IP50 (with rear cover).
- Insulation class: B.
- Brush life time up to 3000 h depending use cycles.

OPTIONS

- Any other input DC voltage is possible up to 240VDC.
- Any other rotation speed between 1000 and 6500 RPM is possible on request.
- Possibility of other flange, in line to your need (plastic molded flange for example, or any other flange B14 or B5 version).
- Possibility of shaft end dedication, in line to your need.
- Possibility to adapt a second output shaft on the opposite side of regular output shaft.
- Possibility to fit a tachometer.
- Possibility to fit a braking system.
- Possibility to fit a parallel gear reducer or planetary gear reducer (refer following pages).

2D PLAN





MA 78-50 MOTOR

CHARACTERISTICS



Part number	MA 78-50 001	MA 78-50 002	MA 78-50 003
Input voltage (VDC)	12	24	48
No load rotation speed (RPM)	3500	3400	3600
No load amperage (A)	2,1	1,0	0,5
Nominal rotation speed (RPM)	3020	2940	3120
Nominal torque (N.cm)	33	33	33
Nominal output wattage (W)	106	100	108
Nominal amperage (A)	13,2	6,3	3,2
Nominal input wattage (W)	159	151	154
Nominal efficiency (%)	66	66	70
Locked rotor torque (N.cm)	245	240	250
Locked rotor amperage (A)	84	40	21
Rotor inertia (g.cm ²)	3300	3300	3300
Max. weight (kg)	1,9	1,9	1,9

PERFORMANCES

