

## MA 78-100 MOTOR

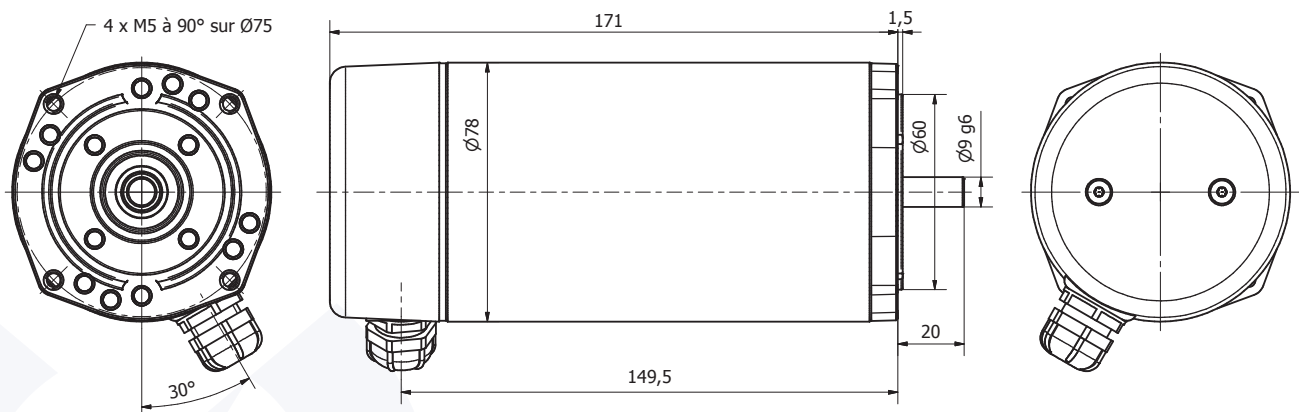
### DESCRIPTION

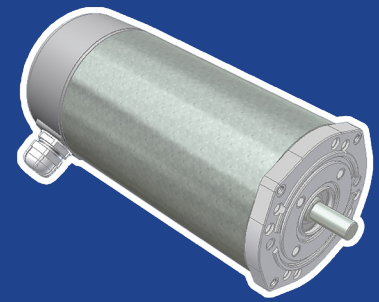
- Permanent magnet motor.
- Rotation direction CW seen from shaft end, the reverse may be obtained by reversing the electrical connection.
- Rotation on 2 ball bearings.
- Electrical connection on 2 tabs of 6.3 x 0.8 mm.
- Open motor with Zamak 63B14 front flange.
- Shown with optional protection rear cover.
- Sealing class: IP50 (with rear cover).
- Insulation class: B.
- Brush life time up to 3000 h depending use cycles.

### OPTIONS

- Any other input DC voltage is possible up to 240VDC.
- Any other rotation speed between 1000 and 6500 RPM is possible on request.
- Possibility of other flange, in line to your need (plastic molded flange for example, or any other flange B14 or B5 version).
- Possibility of shaft end dedication, in line to your need.
- Possibility to adapt a second output shaft on the opposite side of regular output shaft.
- Possibility to fit a tachometer.
- Possibility to fit a braking system.
- Possibility to fit a parallel gear reducer or planetary gear reducer (refer following pages).

## 2D PLAN





## MA 78-100 MOTOR

### CHARACTERISTICS



Part number	MA 78-100 001	MA 78-100 002	MA 78-100 003	MA 78-100 004	MA 78-100 005
Input voltage (VDC)	12	24	48	24	72
No load rotation speed (RPM)	2850	2970	3000	4650	4750
No load amperage (A)	2,3	1,2	0,6	1,0	0,7
Nominal rotation speed (RPM)	2520	2630	2650	4320	4270
Nominal torque (N.cm)	52	57	58	47	70
Nominal output wattage (W)	138	157	161	211	313
Nominal amperage (A)	17	8,7	4,5	12,4	6,2
Nominal input wattage (W)	205	209	215	299	449
Nominal efficiency (%)	67	75	75	71	70
Locked rotor torque (N.cm)	450	490	500	650	700
Locked rotor amperage (A)	130	66	34	170	56
Rotor inertia (g.cm <sup>2</sup> )	5900	5900	5900	5900	5900
Max. weight (kg)	3,2	3,2	3,2	3,2	3,2

### PERFORMANCES

