

MA 63-65 MOTOR

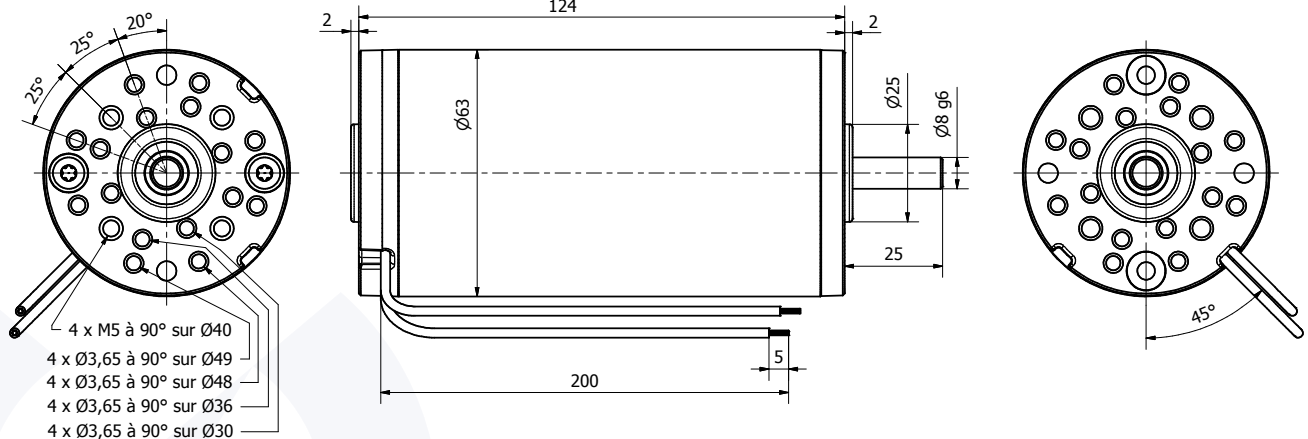
DESCRIPTION

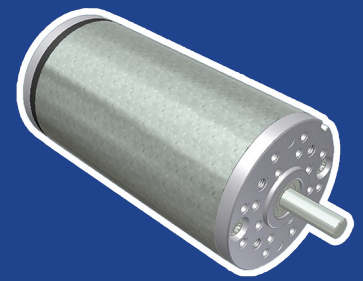
- Permanent magnet motor.
- Rotation direction CW seen from shaft end, the reverse may be obtained by reversing the electrical connection.
- Rotation on 2 ball bearings.
- Electric connection by 2 x 200 mm wires.
- Closed motor with 2 zamak flanges.
- Sealing class : IP50.
- Insulation class : B.
- Brush life time up to 3000 h depending use cycles.

OPTIONS

- Any other input DC voltage is possible up to 240VDC.
- Any other rotation speed between 1000 and 6500 RPM is possible on request.
- Possibility of other flange, in line to your need.
- Possibility of shaft end dedication, in line to your need.
- Possibility to adapt a second output shaft on the opposite side of regular output shaft.
- Possibility to fit a tachometer.
- Possibility to fit a braking system.
- Possibility to fit a parallel gear reducer or planetary gear reducer (refer following pages).

2D PLAN





MA 63-65 MOTOR

CHARACTERISTICS



Part number	MA 63-65 001	MA 63-65 002	MA 63-65 003	MA 63-65 004	MA 63-65 005	MA 63-65 006
Input voltage (VDC)	12	24	48	12	24	48
No load rotation speed (RPM)	2650	2750	2800	3600	3750	3800
No load amperage (A)	1,3	0,7	0,4	1,9	1,0	0,5
Nominal rotation speed (RPM)	2200	2280	2300	3080	3210	3250
Nominal torque (N.cm)	21	22	23	27	29	29
Nominal output wattage (W)	49	51	55	88	97	98
Nominal amperage (A)	6,2	3,3	1,8	11,7	6,0	3,0
Nominal input wattage (W)	75	80	85	140	145	145
Nominal efficiency (%)	65	64	65	63	67	68
Locked rotor torque (N.cm)	123	125	128	190	200	200
Locked rotor amperage (A)	30	16	8	70	36	17
Rotor inertia (g.cm ²)	627	625	625	627	627	625
Max. weight (kg)	1,5	1,5	1,5	1,5	1,5	1,5

PERFORMANCES

