

CA 78-50 DC ELECTRIC COMPRESSOR

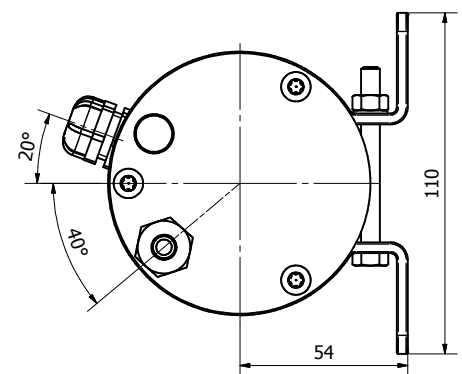
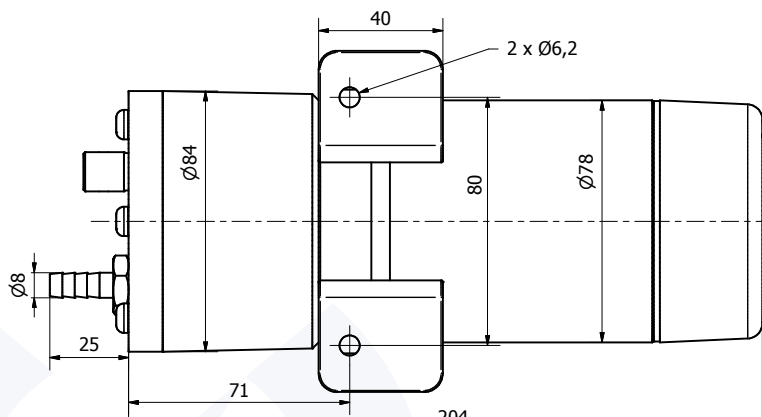
DESCRIPTION

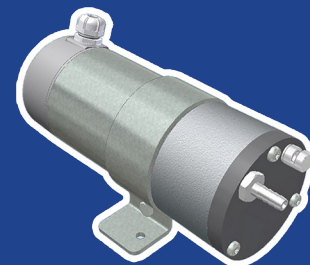
- Permanent magnet motor.
- Rotary vane compressor.
- Rotation on 2 ball bearings.
- Electric connection on 2 tabs 6.3 x 0.8 mm.
- Discharge connection $\varnothing 8$ mm.
- Oil port to the suction.
- Chamber of compression molded iron cast aluminum.
- Rotor barrel in steel and blades in Celoron®.
- Sealing class: IP50.
- Insulation class: B.
- Brush life time up to 3,000 h depending use cycles.

OPTIONS

- Possibility to fit a suction filter for polluted atmosphere.
- Possibility to fit any other discharge connection, in line to your need.
- Possibility to fit a metal back cover to protect shocks.
- Possibility to fit your electrical connector instead of integrated Fast-on® tabs.

2D PLAN





CA 78-50 GEARED MOTOR

CHARACTERISTICS



Part number	CA 78-50 001	CA 78-50 002	CA 78-50 003	CA 78-50 004	CA 78-50 005	CA 78-50 006
Input voltage (VDC)	12	24	48	72	120	230
Air volume flow (m³/h)	Pressure discharge (kPa) (1 bar = 100 kPa)					
9,0	10	13	15	15	13	15
7,8	35	37	45	43	43	40
6,0	80	86	87	85	82	85
4,8	90	95	100	100	100	100
0	110	120	130	125	125	125
No load amperage (A)	25	12	6,0	4,5	3,0	1,6
Max. overall weight (kg)	3,6	3,6	3,6	3,6	3,6	3,6